



# Numerical Investigation of the Flow Field inside a Manhole-Pipe Drainage System

Md Nazmul Azim Beg<sup>1,2,3</sup>, Rita F. Carvalho<sup>1,2</sup>, Pedro Lopes<sup>1,2</sup>, Jorge Leandro<sup>1,2</sup>  
and Nuno Melo<sup>1</sup>

<sup>1</sup> Dep. of Civil Engineering, Faculty of Science and Technology,  
University of Coimbra, Portugal

<sup>2</sup> Marine and Environmental Sciences Centre & IMAR - Institute of Marine Research,  
University of Coimbra, Portugal

<sup>3</sup> Early Stage Researcher, Marie Curie Actions ITN (QUICS)

6<sup>th</sup> International Symposium on Hydraulic Structure  
Portland, Oregon  
29 June, 2016



# Introduction



One of the busiest city in Dhaka, due to 46mm of rainfall in one and a half hour; on afternoon of September 1, 2015.  
*Photo Credit: The Daily Star on September 2, 2015.*



Pluvial flooding at City centre of Coimbra on May 2006  
*Photo Source: <http://www.raingain.eu/en/actualite/flood-solutions-north-south-europe>*



Chertsey, UK on February 11, 2014  
*Photo source: The Guardian on 11 February, 2014*

# Introduction



- Flooding is one of the biggest threats for a busy urban city
- The urban drainage system is responsible for safe routing of flood water; hence an efficient drainage is mandatory
- Drainage system efficiency is dependent on the individual efficiency of each element
- Manhole is one of the most common features of an urban drainage system
- Analysis of flow characteristics inside a manhole can give a better understanding of the flow efficiency

# Objective

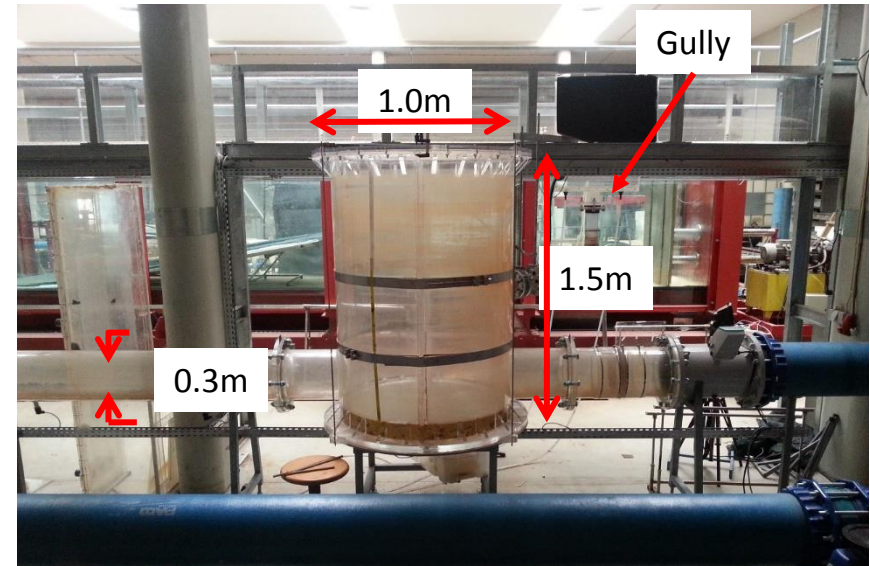
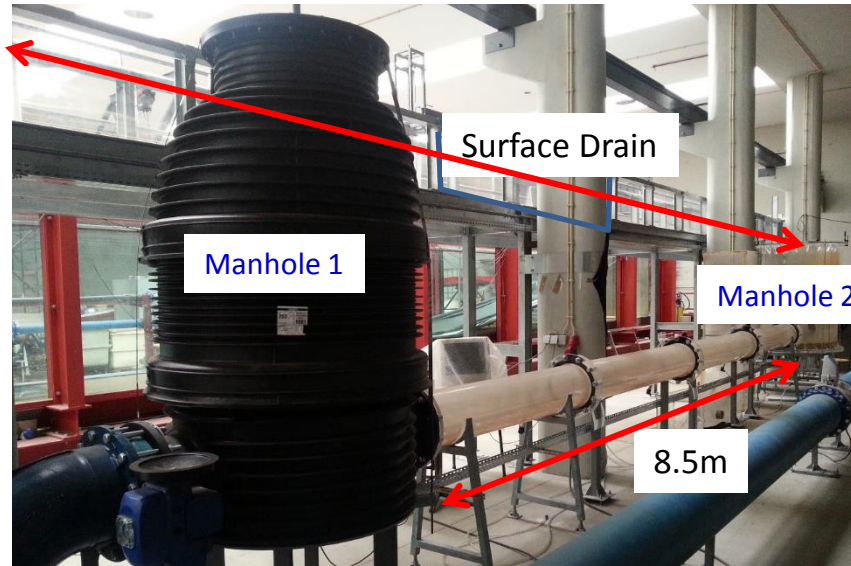


- To validate CFD model with experimental measurement at the laboratory
- To analyse the different flow behaviour inside a manhole



# Methodology

## Physical Model set up

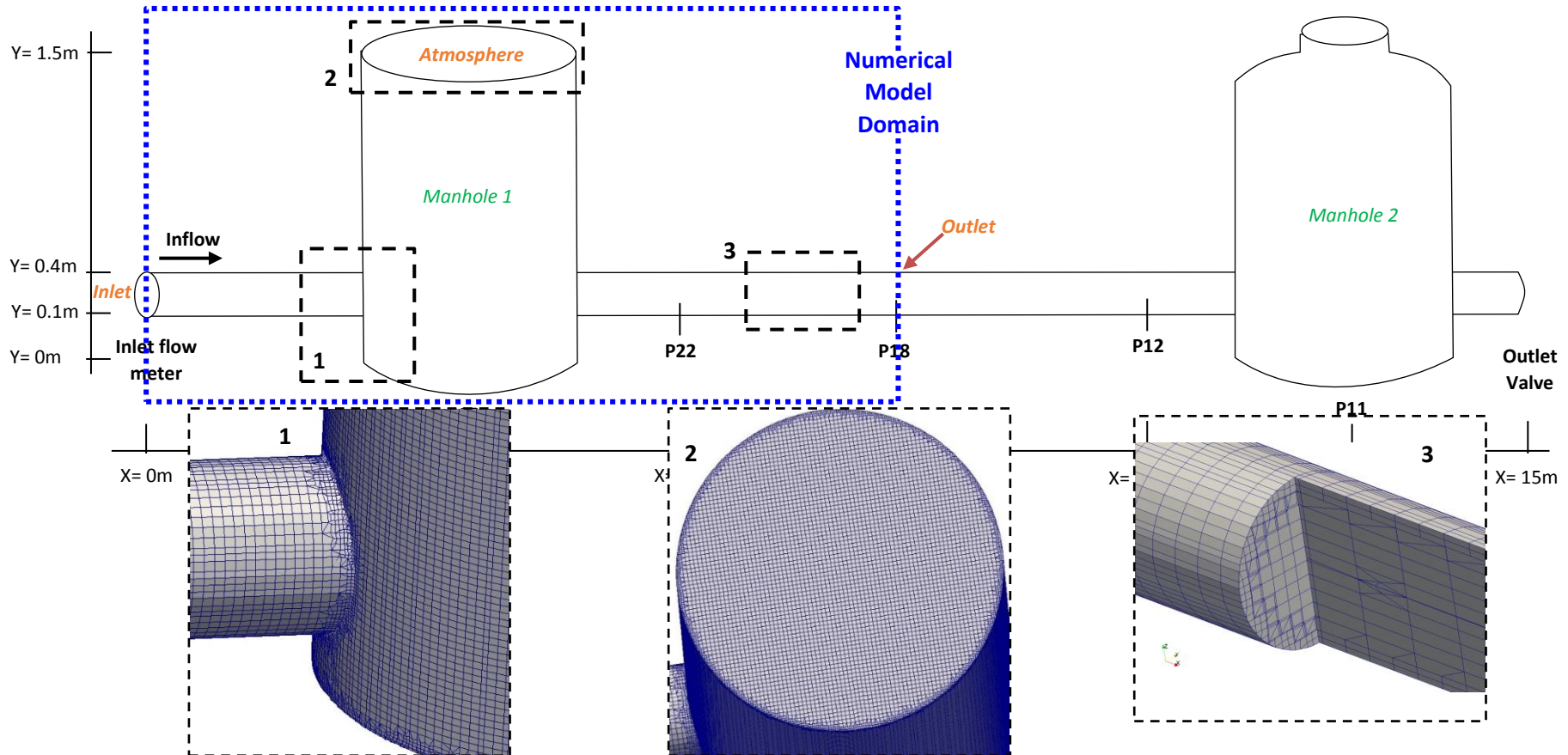


The physical model facility is installed at the Department of Civil Engineering, University of Coimbra. The Physical model is consists of:

- Two manholes
- Connected by a  $\varnothing 300$  sewer pipe
- 10 m long and 0.6 m wide and 1% sloped surface channel
- Two gullies (only one is in the picture)
- It has the ability to simulate simultaneously the surface and the transparent sewer system

# Methodology

## Numerical Model set up



- *SnappyHexMesh*
- Mesh size 2.5cm at manhole and 2.5-10cm at the pipe
- 1.75 cm at the walls
- 210,000 computational meshes

# Methodology



## OpenFOAM simulation

- OpenFOAM v. 2.3.0
- *interFOAM* solver: considering isothermal, incompressible and immiscible two-phase flow (air and water for this case)
- Mass and Momentum conservation

$$\frac{\partial \rho}{\partial t} + \nabla \cdot (\rho \mathbf{u}) = 0$$

$$\frac{\partial \rho \mathbf{u}}{\partial t} + \nabla \cdot (\rho \mathbf{u} \mathbf{u}) = -\nabla p^* + \nabla \cdot \boldsymbol{\tau} + \mathbf{g} \cdot \mathbf{x} \nabla \rho + \mathbf{f}_\sigma$$

- Uses Volume of Fluid (VOF) method (Hirt and Nichols 1981) to track the free surface or interface location
- RAS k- $\epsilon$  turbulent model was used
- PISO algorithm was used

# Methodology

## Tests performed



- Combinations of different inflows and surcharge level in the manhole
- 18 different scenarios:
  - both high and low flow (using upstream valves)
  - high pressure and low pressure conditions (using downstream valves)
  - Both free surface and pressure flow in the pipe

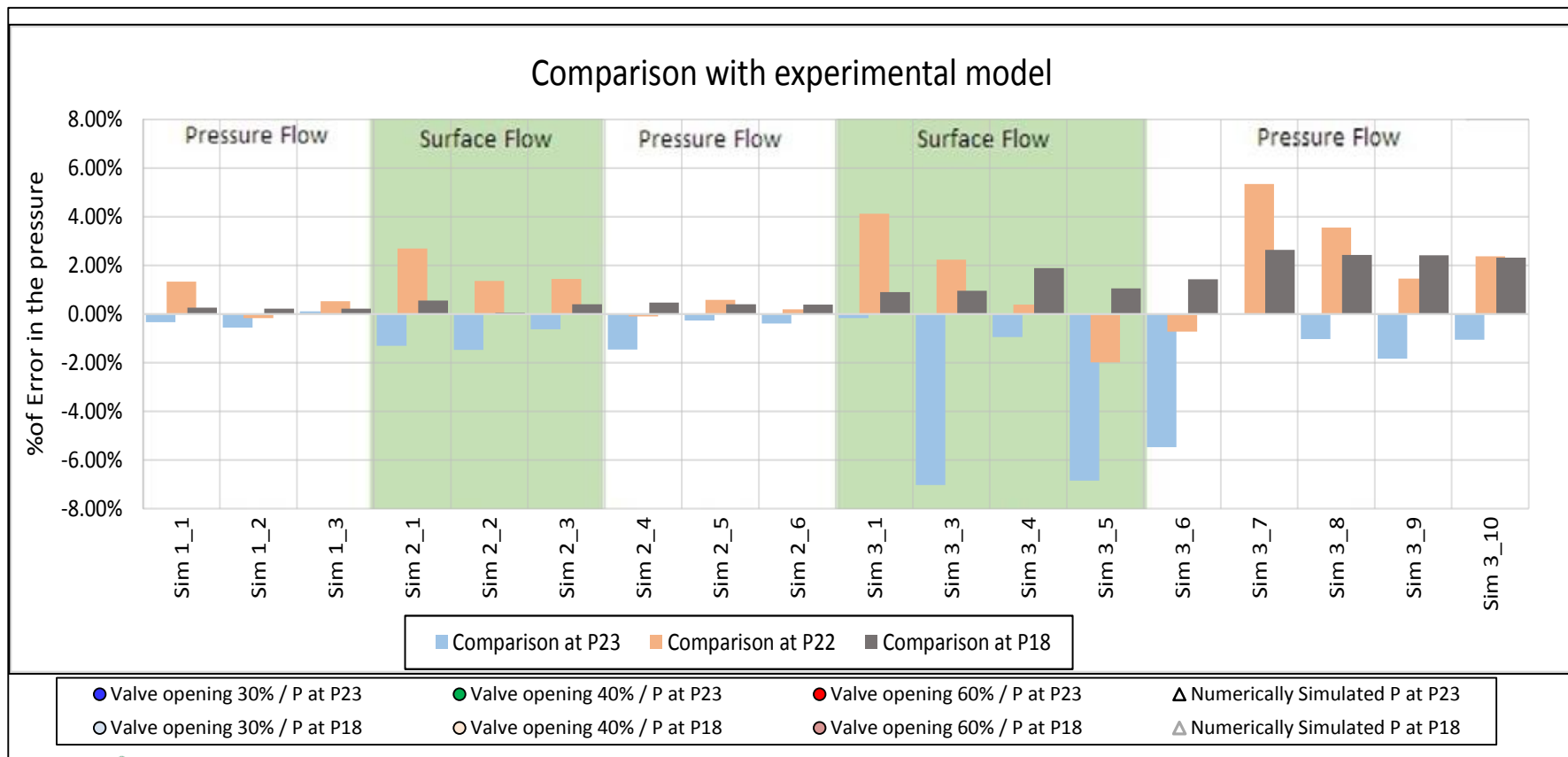


# Results



Comparison with experimental tests performed

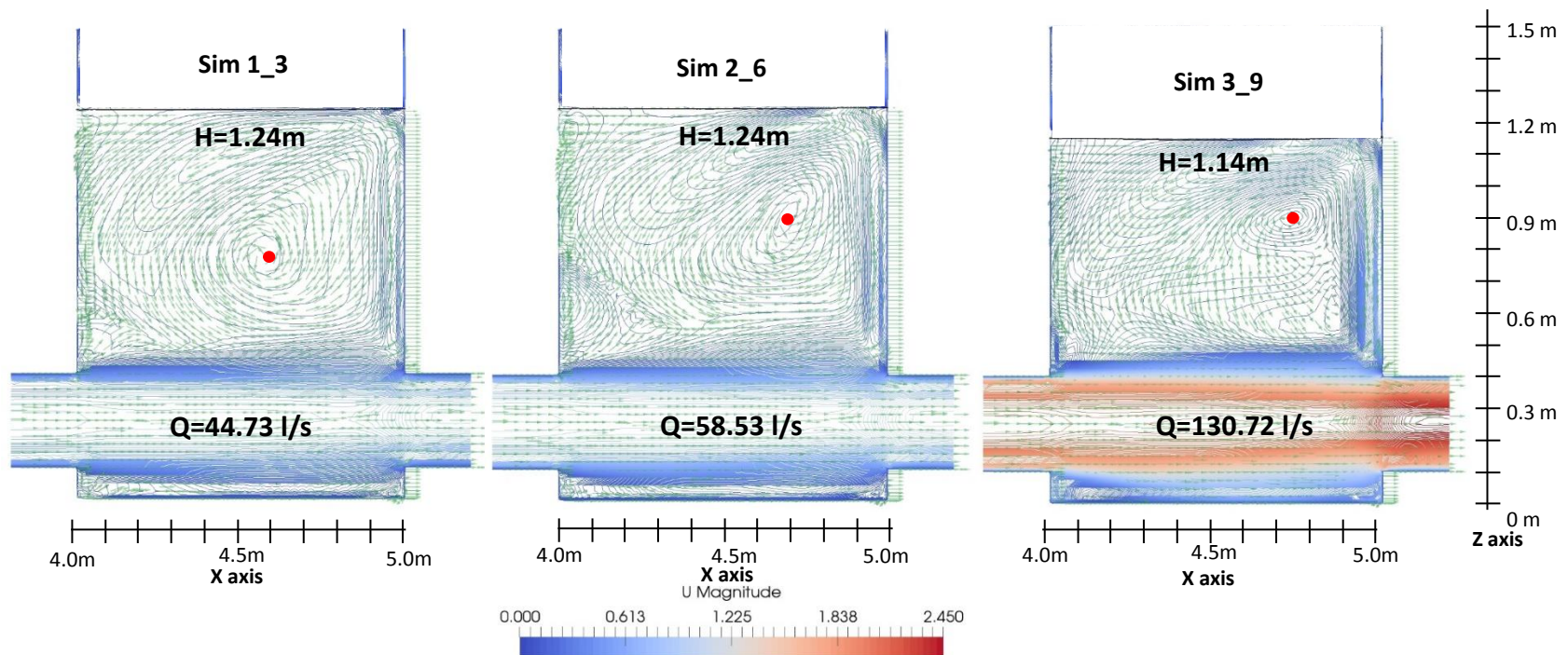
- Comparison with measured discharge (electromagnetic discharge meter) and pressure (pressure sensor)



# Results

## Flow comparison for different inflow

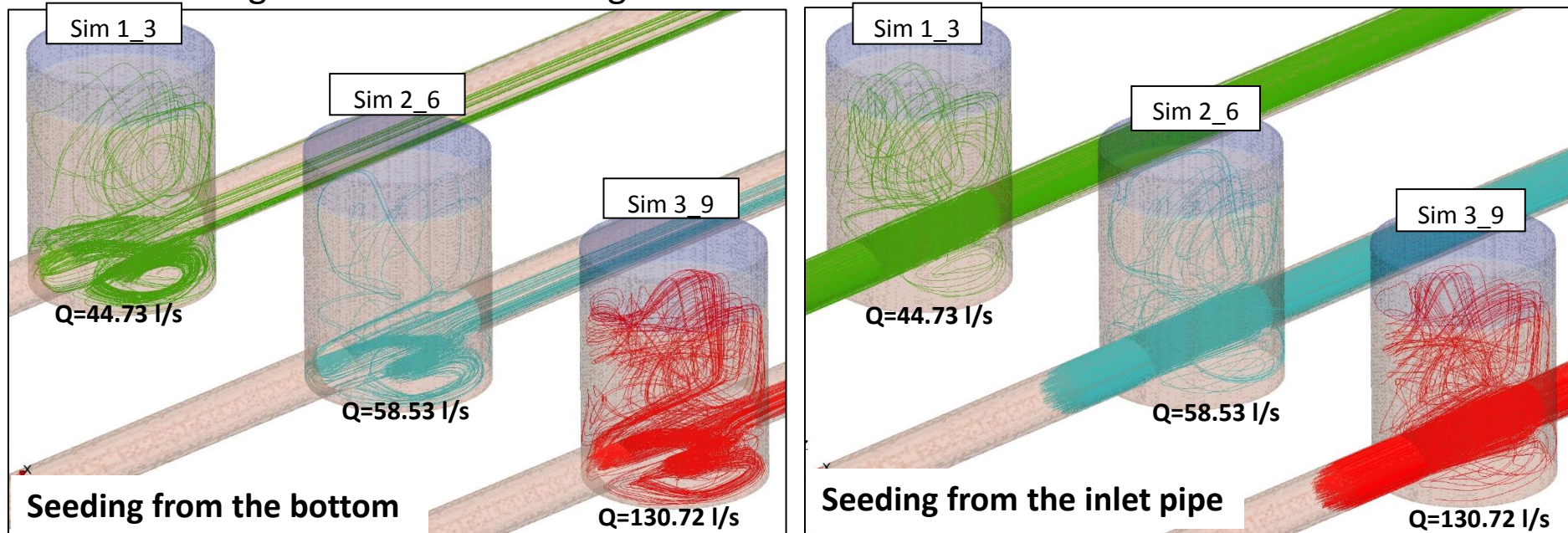
- Similar surcharge with different inflow
- Vortex formation is different
- Vortex centre moves higher and further from the inlet



# Results

## Flow comparison for different inflow

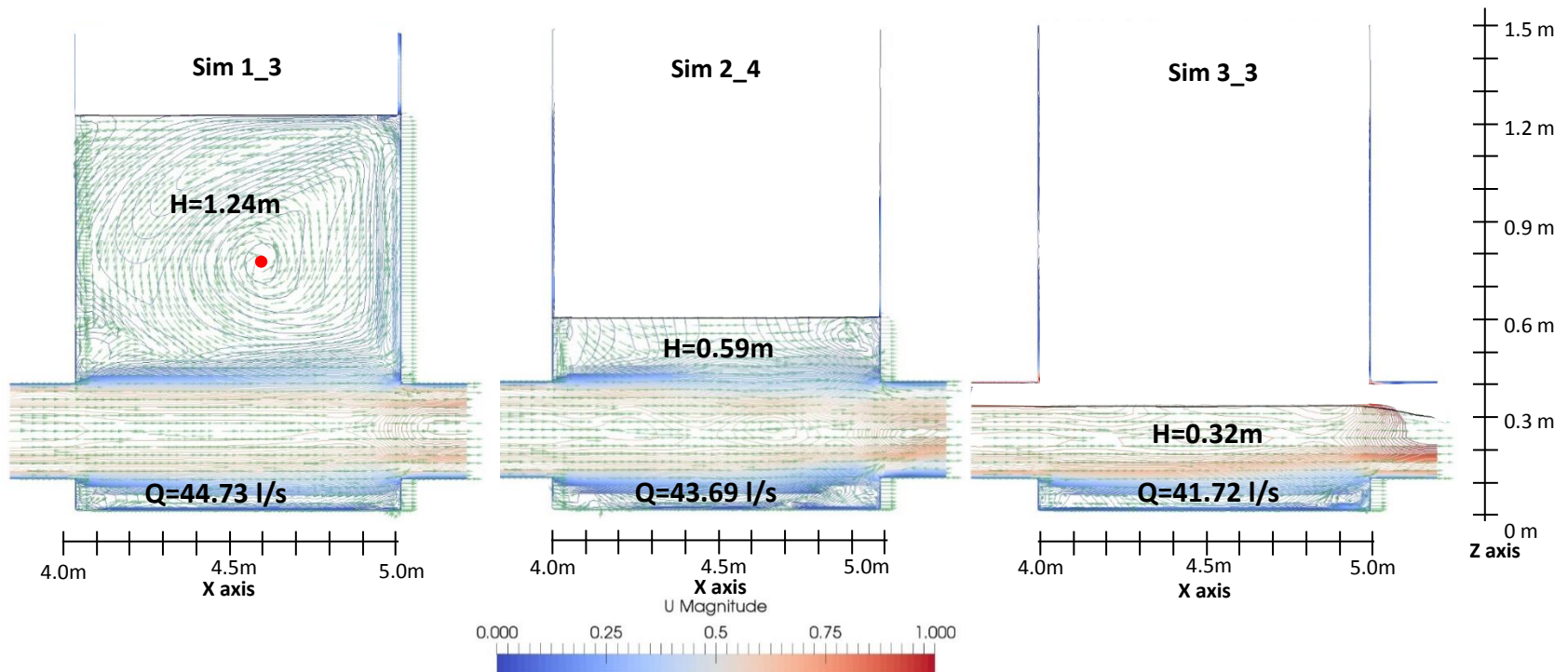
- Two types of the streamlines have different pathways
- A particle from the bottom of manhole is likely to travel more inside
- For particle initially at manhole base:
  - Higher inflow > more traveling to the top > More residence time inside manhole
- For particle coming through inlet:
  - Higher flow > more mixing inside the manhole



# Results

## Flow comparison for different surcharge

- Similar inflow with different surcharge
- Vortex forms only over a certain surcharge depth
- At lower surcharge, flow is mostly parallel to the dominant direction

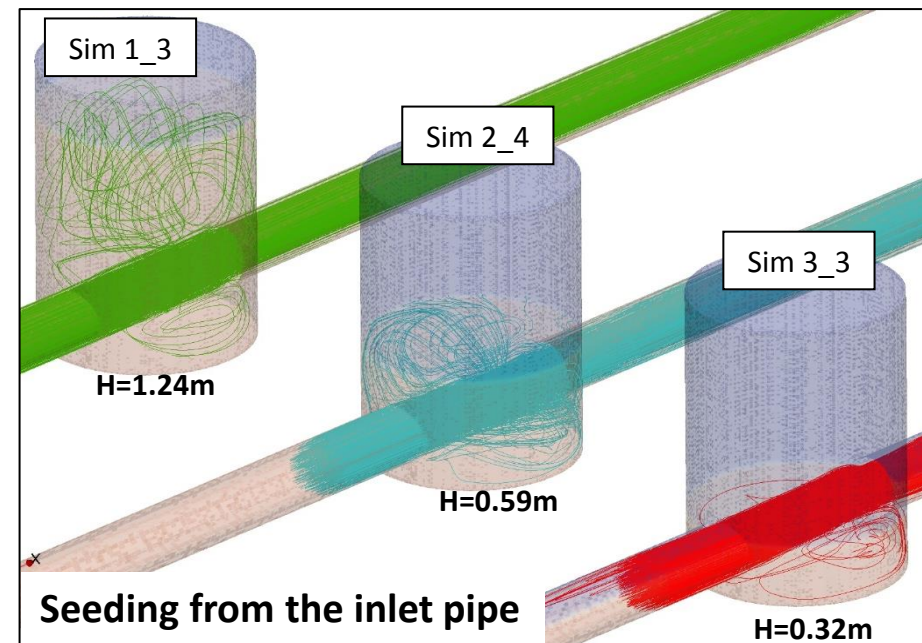
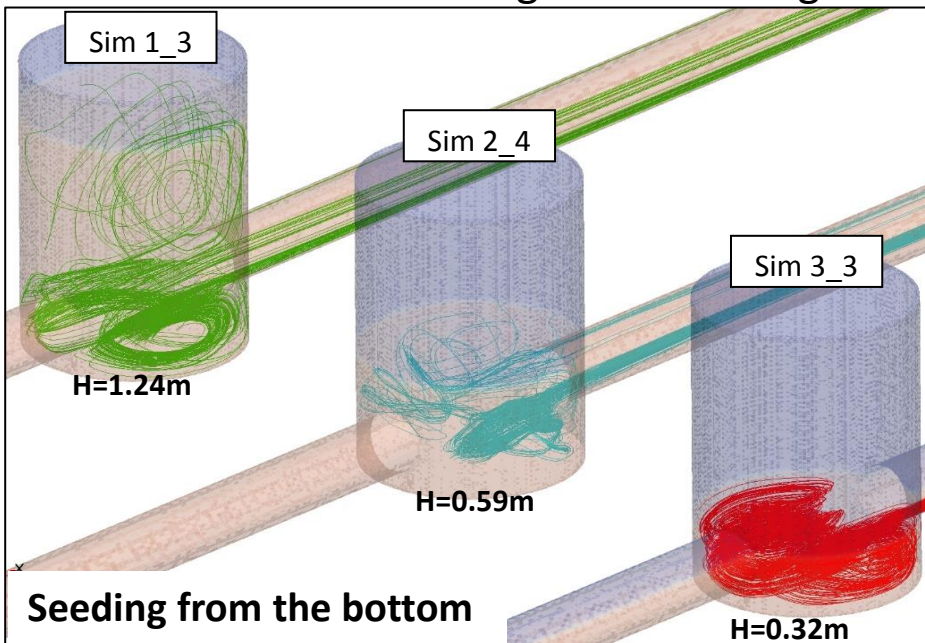




# Results

## Flow comparison for different inflow

- In Sim 3\_3, most streamline from the bottom circulates inside manhole
- For particle initially at manhole base:
  - Lower surcharge > more particles stay inside
- For particles coming through the pipe
  - Lower surcharge > less mixing inside manhole

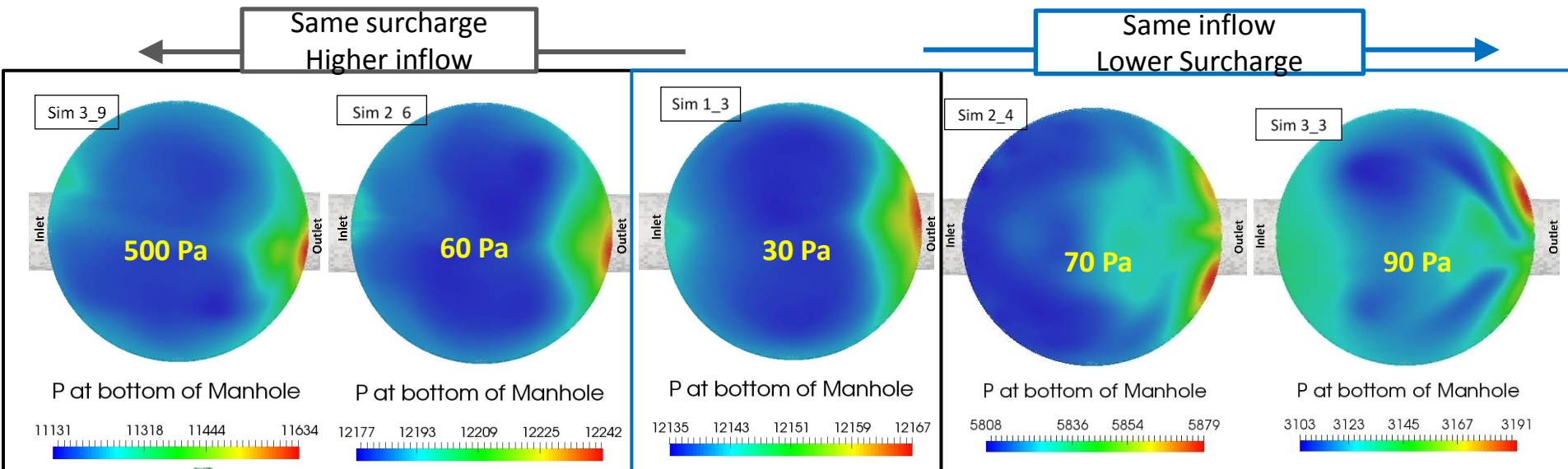




# Results

## Pressure level at the manhole bottom

- All have higher pressure near outlet
- Same surcharge:
  - Similar pressure gradient map
  - Diff. between max and min pressure rises with inflow
- Same inflow
  - Different pressure gradient map
  - Diff. between max and min pressure oppositely to the surcharge



# Conclusion



- The work presented shows the first step numerical assessment of flow behaviour inside a manhole
- OpenFOAM<sup>®</sup> v. 2.3.0 with solver interFOAM was used with RANS k- $\epsilon$  turbulence model
- Numerical model shows good agreement with experimental pressure data (less than 7% error)
- Flow streamline and manhole bottom pressure show different characteristics with change in inflow and/or surcharge level in the manhole.

# Future Work



- The model will be validated with flow measurement inside the manhole
- The work will be further developed to better understand the particulate transport phenomena inside the manhole-pipe drainage system



**Thank you  
for your attention**

**Nazmul Azim Beg  
Email: mnabeg@uc.pt**



# Partners and Acknowledgements



This project has received funding from the European Union's Seventh Framework Programme for research, technological development and demonstration under grant agreement no 607000.

First author would also like to thank FCT (Portuguese Foundation for Science and Technology) for their support through the Project UID/MAR/04292/2013 financed by MEC (Portuguese Ministry of Education and Science) and FSE (European Social Fund), under the program POCH (Human Capital Operational Programme).

