



EmuMore

Boosting flood warning schemes with fast emulator of detailed hydrodynamic models

Vasilis Bellos^{1,2}, Juan Pablo Carbajal³, Joao Paulo Leitao³

¹CH2M, UK

²National Technical University of Athens (NTUA), Greece

³Swiss Federal Institute of Aquatic Science and technology (EAWAG), Switzerland

Flood warning schemes

- Predicting time response for several water levels at critical points
- Combining models
 - rainfall-runoff
 - dam-breach
 - wind wave
 - hydrodynamic
- Fast and accurate results
- Computational burden
 - 2D hydrodynamic simulators
- Emulators
 - training data derived by detailed simulators

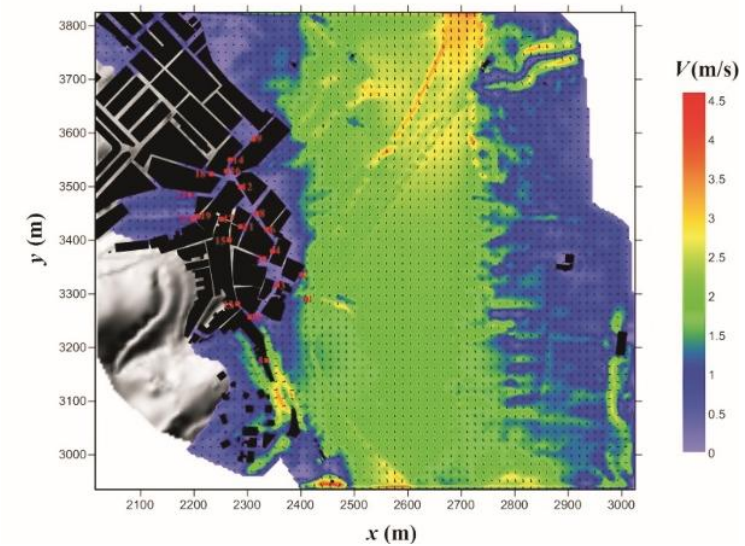
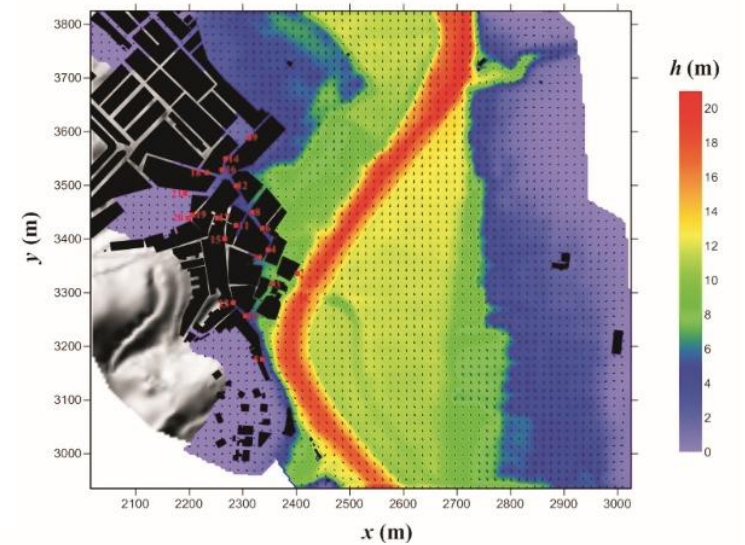
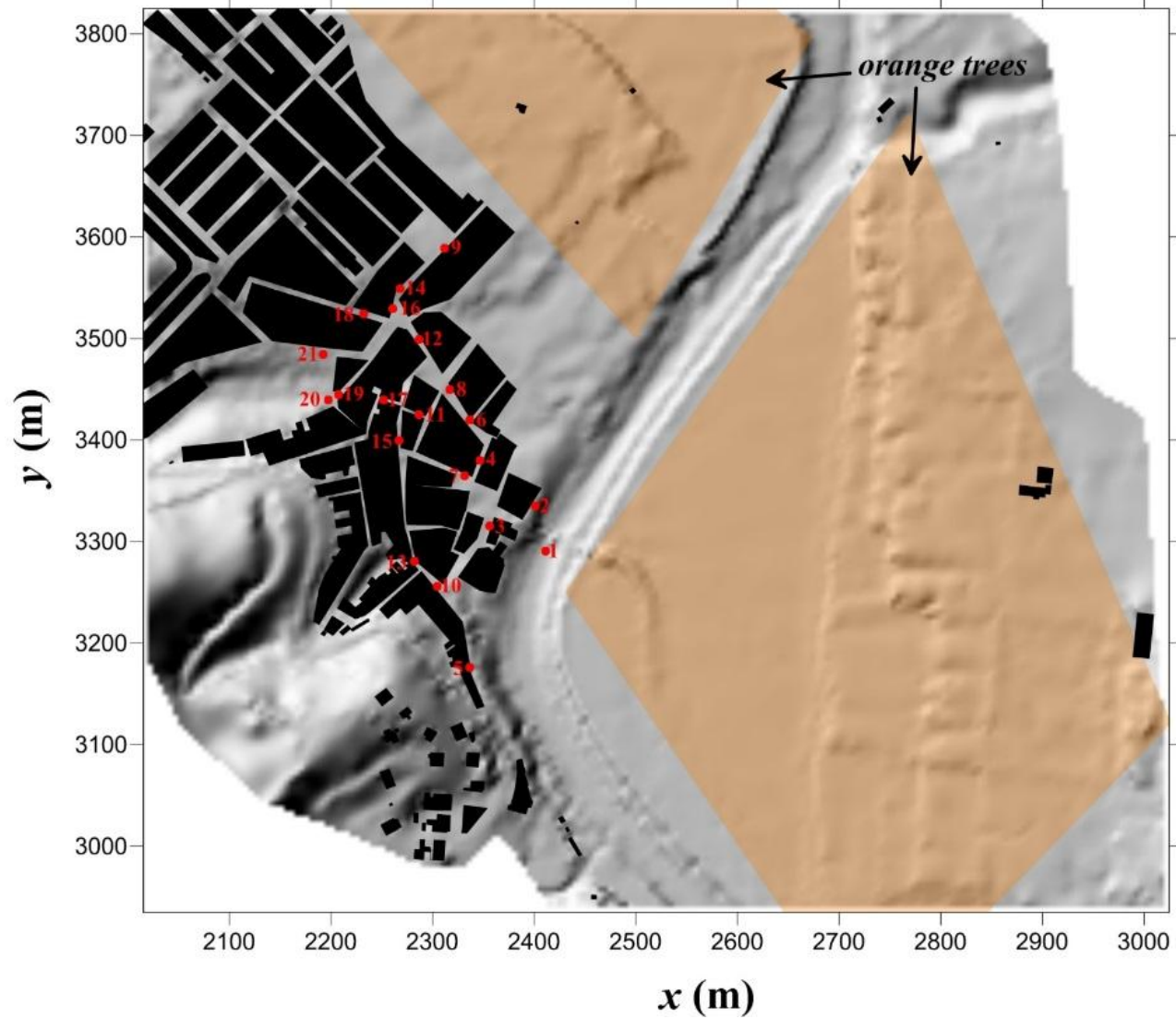
Posing the problem

- Developing an emulator system
 - flood warning after a dam break
 - 2D hydrodynamic simulator → FLOW-R2D model
- No measurements
 - three-input emulator
- Measurements
 - two-input emulator → calibration
 - one-input emulator → prediction

FLOW-R2D model

- Solving the 2D-SWE using FDM
- Modified McCormack numerical scheme
- Artificial viscosity is added
- Water depth threshold for wet/dry modelling
- Manning equation
 - friction modelling
 - effective slope for upstream boundaries
- Representation of buildings → solid boundaries

Example



No measurements

- Gaussian Process
- Three-input emulator
 - inflow \rightarrow 10000 – 20000 m³/s
 - Manning coefficient \rightarrow 0.03 – 0.21 s/m^{1/3}
 - effective slope \rightarrow 0.0001 – 0.02
- Output
 - time response for water levels at critical points
- Training data set \rightarrow 240 runs (LHS)

Measurements

calibration phase

- Gaussian Process
- Two-input emulator → constant inflow 15000 m³/s
 - Manning coefficient → 0.03 – 0.21 s/m^{1/3}
 - effective slope → 0.0001 – 0.02
- Output
 - water depth after convergence
- Training data set → 150 runs (LHS)

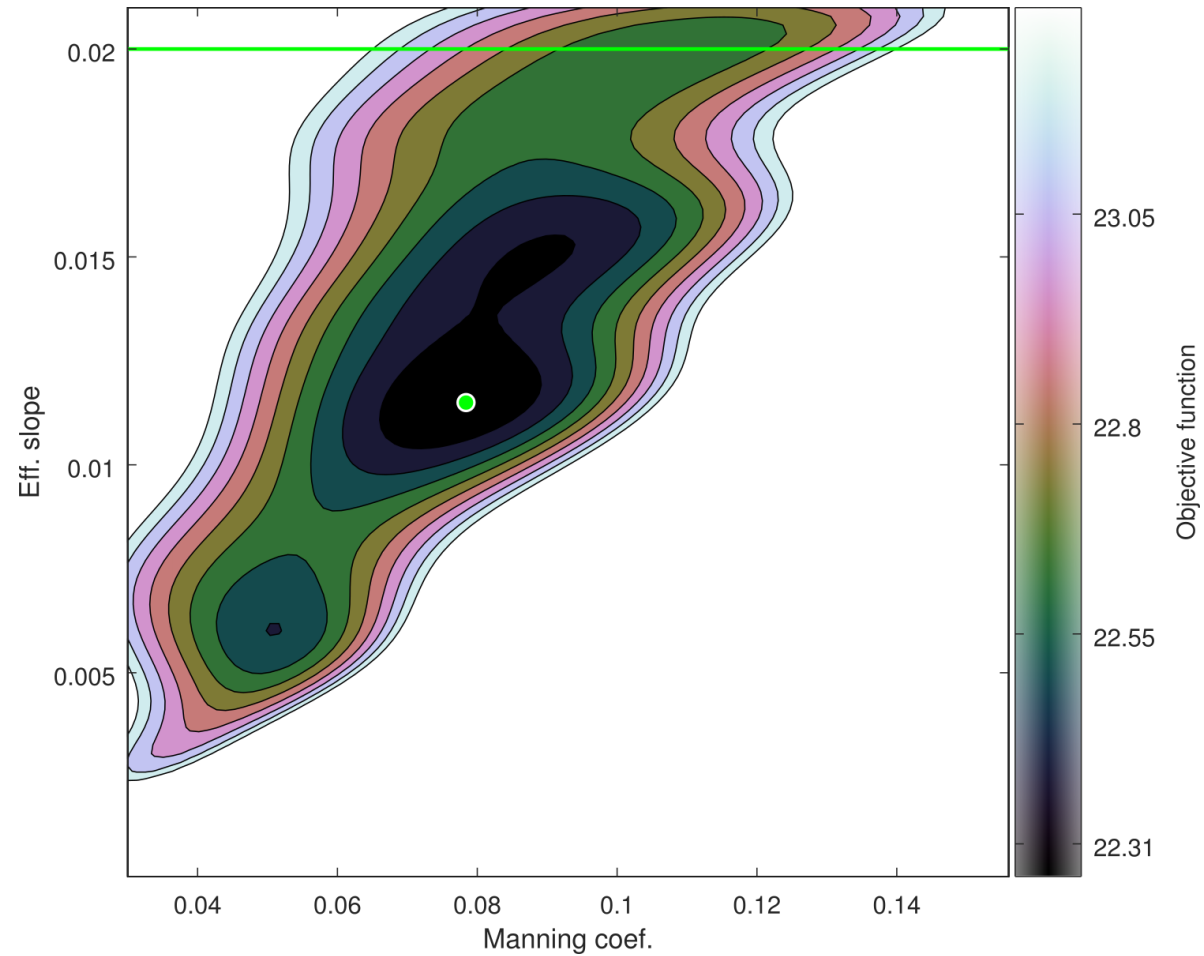
Measurements

prediction phase

- Spline interpolation
- One-input emulator → calibrated parameters
 - inflow → 10000 – 20000 m³/s
- Output
 - time response for water levels at critical points
- Training data set → 100 runs (uniform sampling)

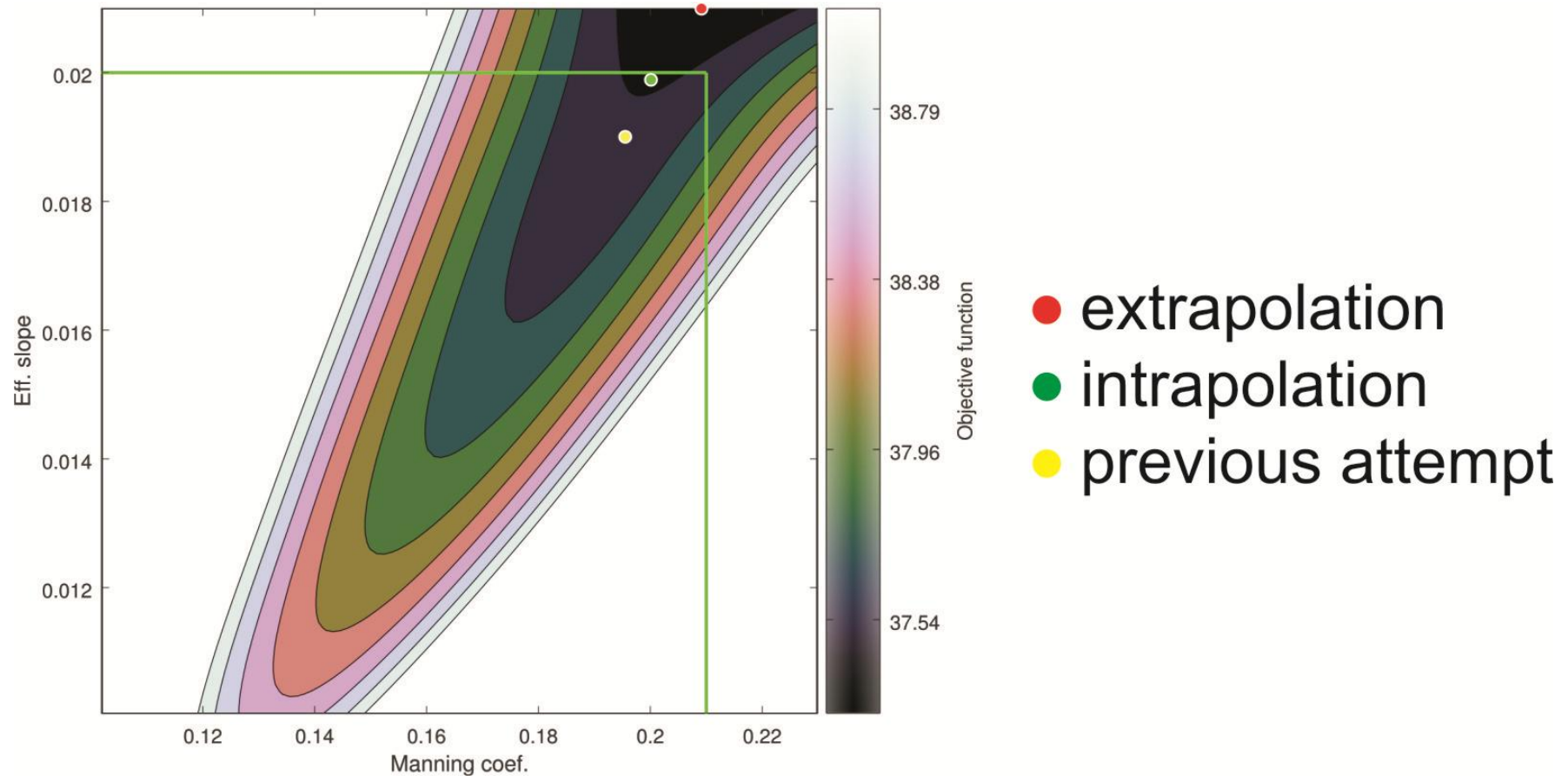
Calibration phase

3-input emulator



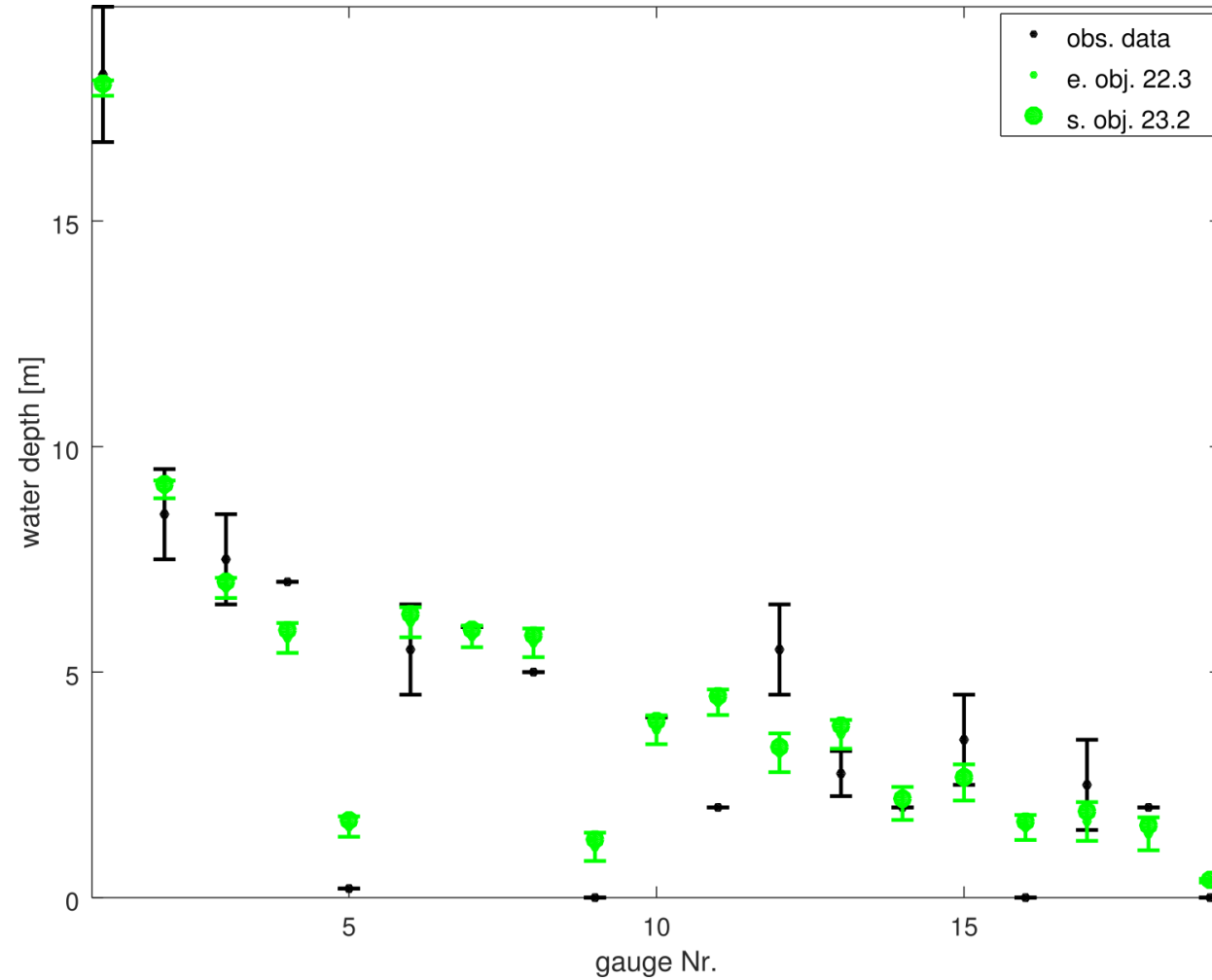
Calibration phase

2-input emulator



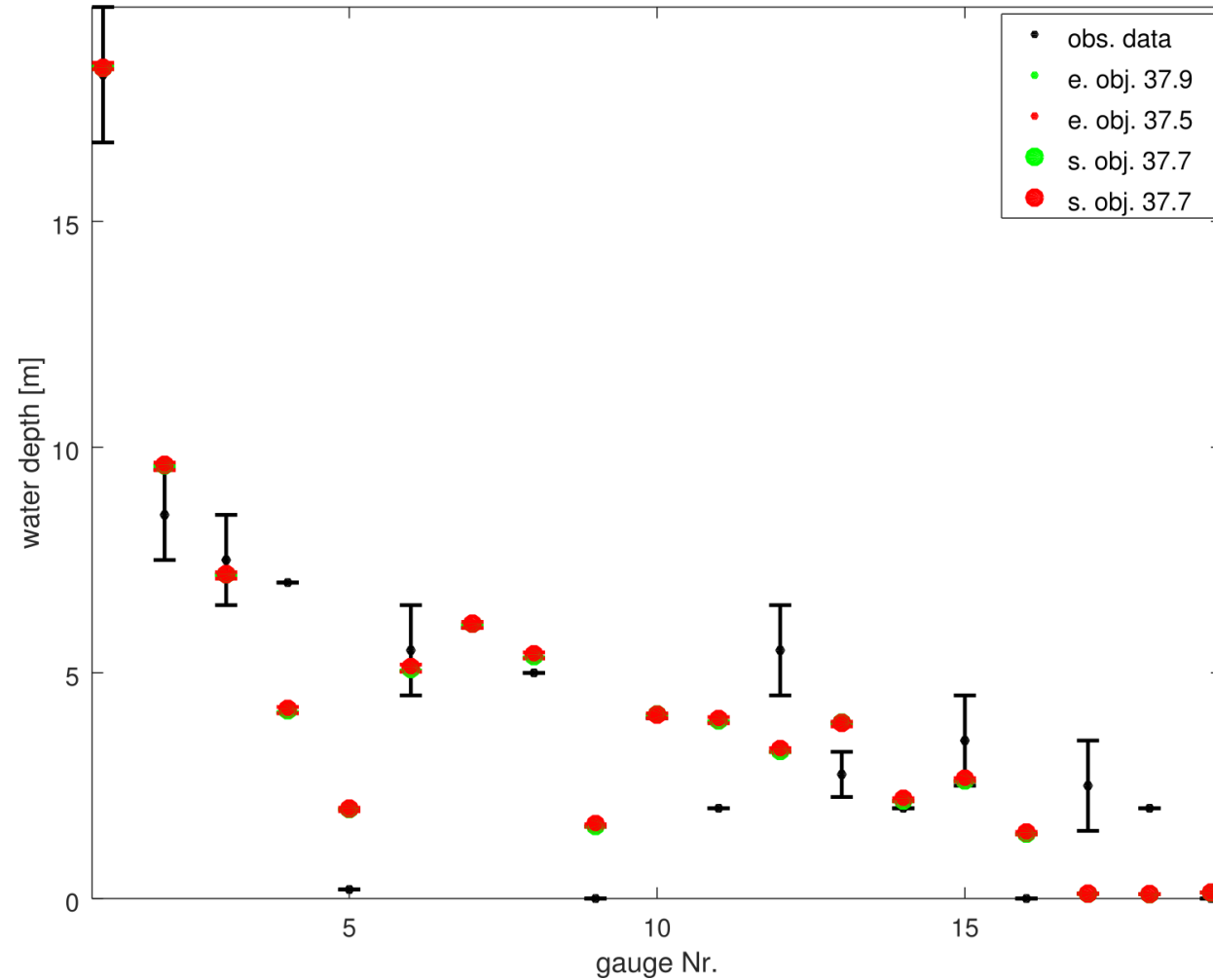
Validation phase

3-input emulator



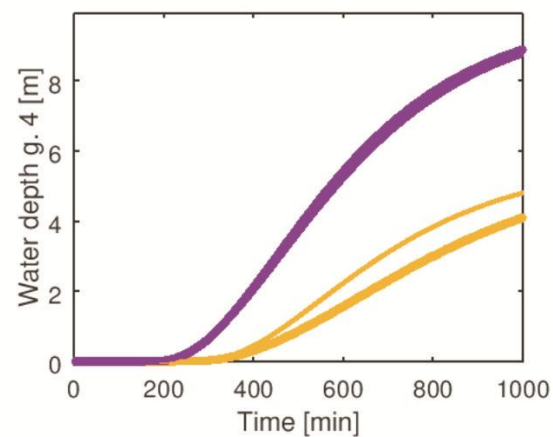
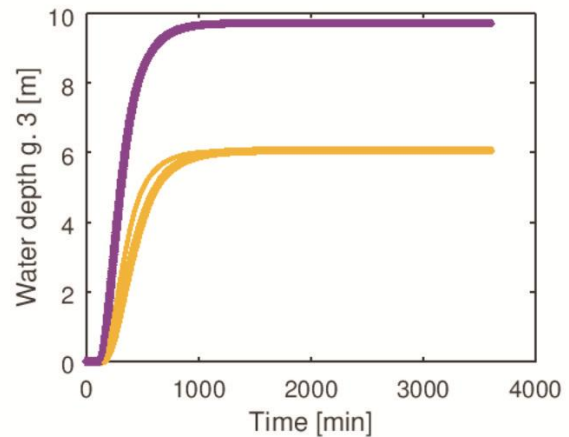
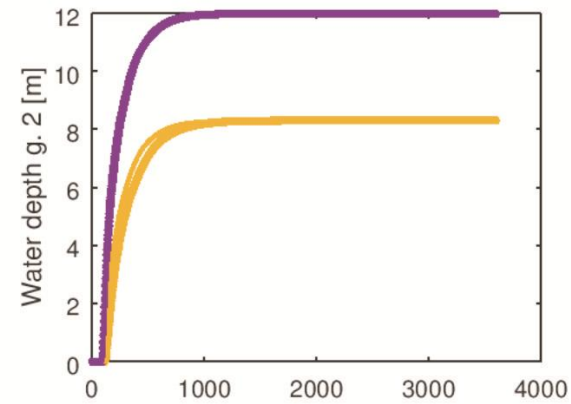
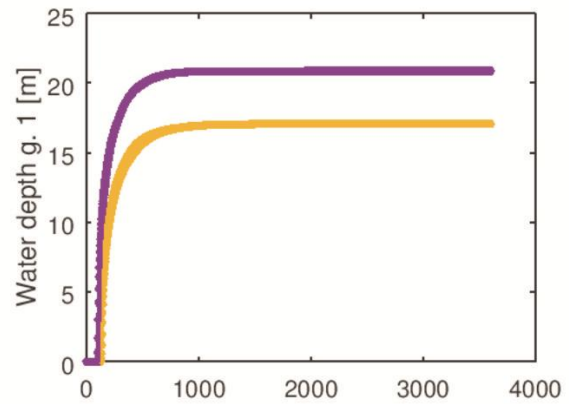
Validation phase

2-input emulator



Response time

1-input emulator



— Q=10900 m³/s
— Q=19900 m³/s

Conclusion

- Three-input emulator
 - no measurements required
 - adaptive tool for calibration, uncertainty quantification etc.
 - less accurate results
 - larger sample of runs
- Combining two-input with one-input emulator
 - requires measurements
 - non-adaptive tool
 - more accurate results
 - less sample of runs



Partners & Acknowledgements



WATERWAYS



RUHR
UNIVERSITÄT
BOCHUM

RUB



This project has received funding from the European Union's Seventh Framework Programme for research, technological development and demonstration under grant agreement no 607000.