

CHUANRAN NIE MAGNETIC RIVER EDGE

River Landscape / Nature Nearby / Water's Edge / Public Space
Dazhou, China

LinseNie@gmail.com

<https://issuu.com/linsen9752>

Over the past 30 years, China has sacrificed a huge area of public space for development, urban change and expansion, and the decline of the ecological environment has left cities and people passive to the impact this has had on the environment.

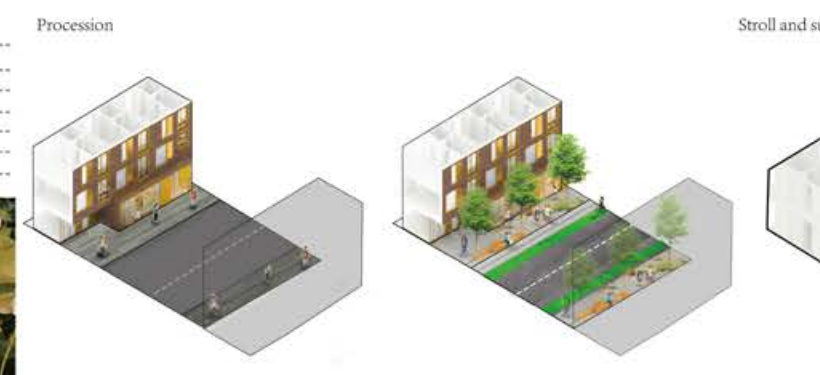
This project aims to plan and design the Dazhou River space in order to create new character and to provide a functional space for local residents, thereby establishing a vibrant social space along the river to encourage people to visit. The

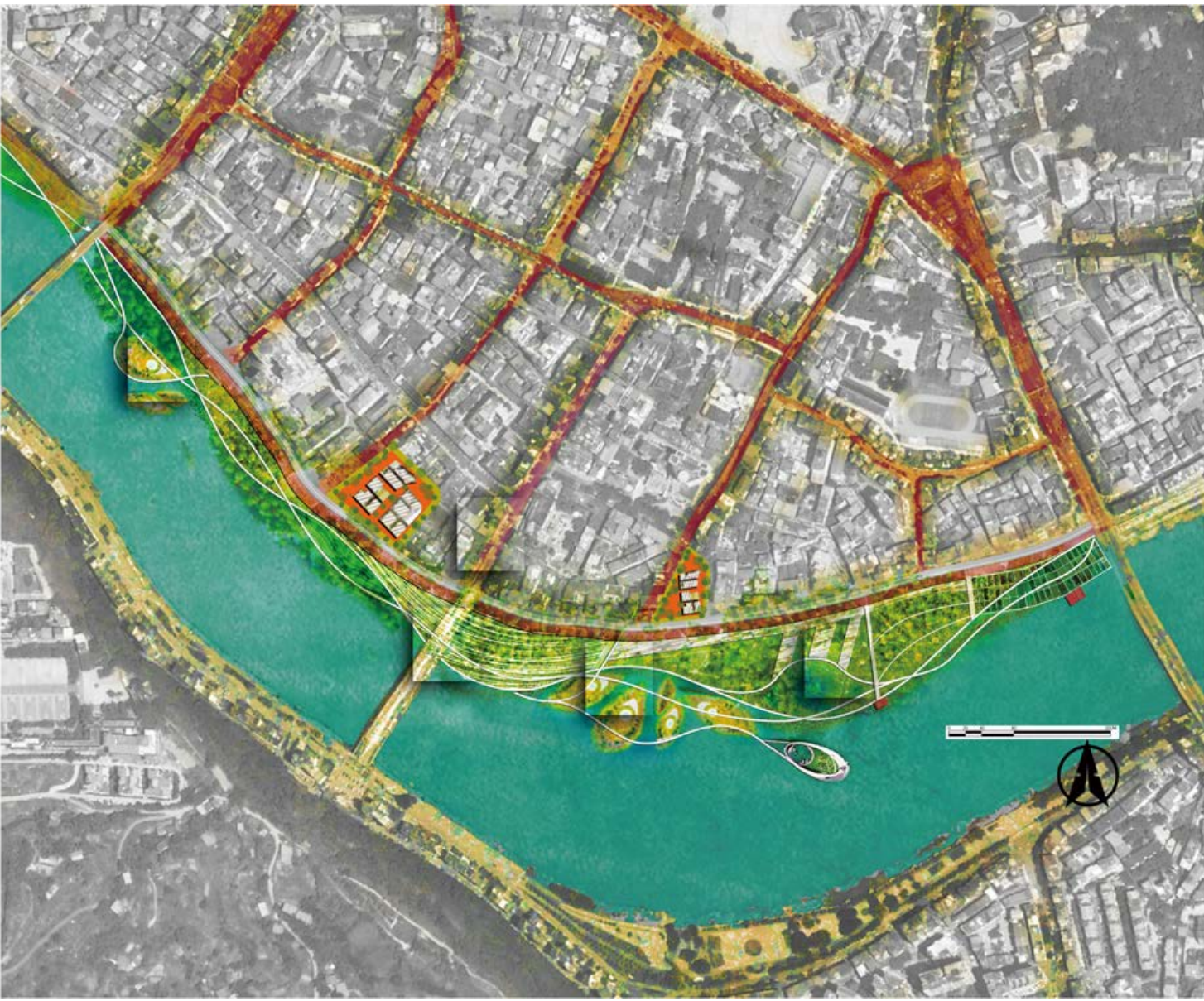
project will establish barrier-free links and passages between the city and the river bank, which guide people towards the riverside area. The river will be promoted as a more healthy and active space, while its new features cater to the natural ecosystem. In this way, a symbiosis will be created between the new riverside landscape and the city.

1. Wet-island Edge
2. Cross-site Section
3. Detailed Masterplan
4. Vibrant River Edge
5. Hydrophilic Platform
6. Bridge Wetland
7. Procession Street View



1





3



4



5



2



6



7

