

Research funding from:


National Institute for
Health Research

#MUPlocal

Minimum Unit Pricing (MUP)

Evidence Assets developed by:-



The
University
Of
Sheffield.

Master Slide Deck for all MUPLocal presentations

Rochdale

1. Short UTLA/Region specific slides



#MUPlocal

Minimum Unit Pricing (MUP)

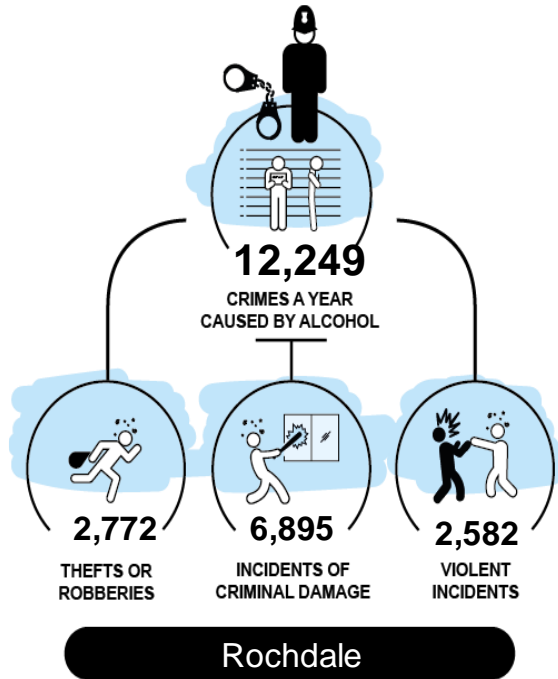
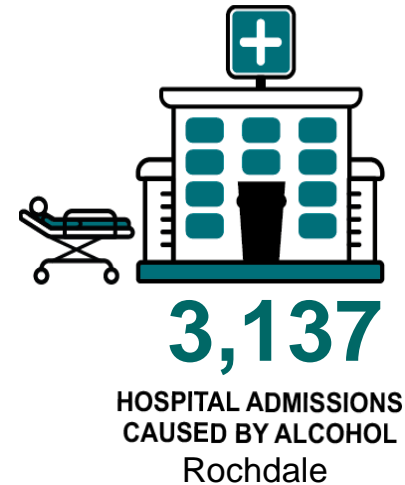
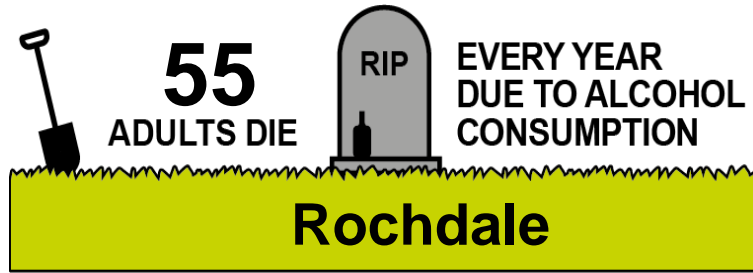
Exploring the impact of the local implementation of a
minimum price for a unit of alcohol

- the evidence for

Rochdale

Setting the Scene

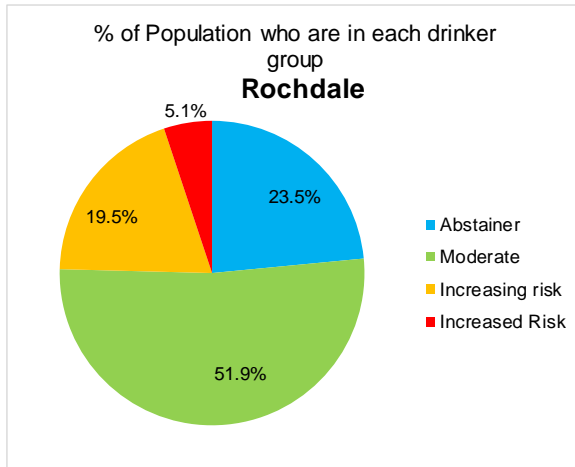
The scale of the local problem



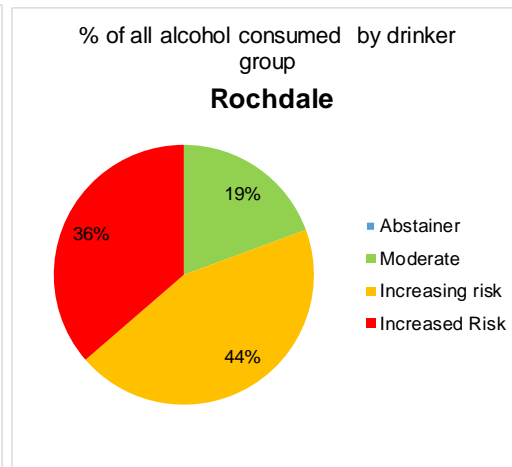
Rochdale

In Rochdale

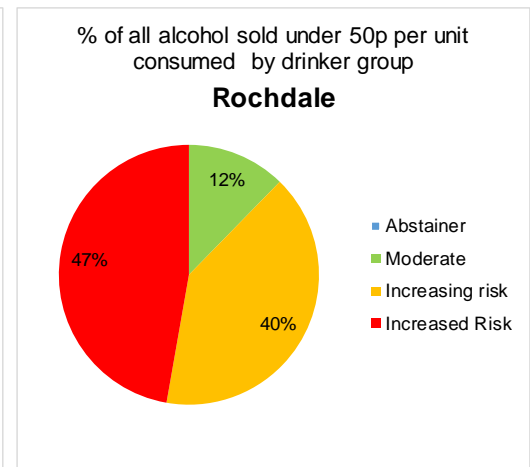
5.1% of people drink at high risk levels



They drink **36%** of all alcohol

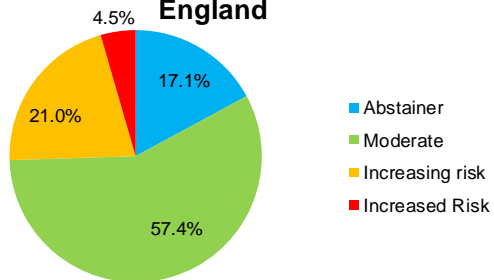


They drink **47%** of the cheap alcohol sold below 50p per unit



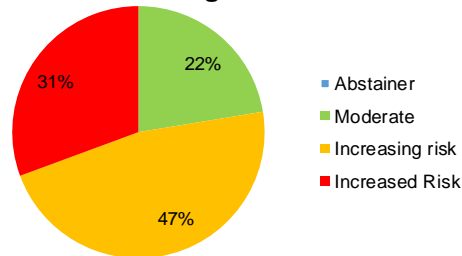
% of Population who are in each drinker group

England



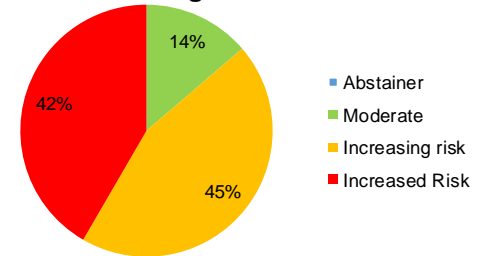
% of all alcohol consumed by drinker group

England

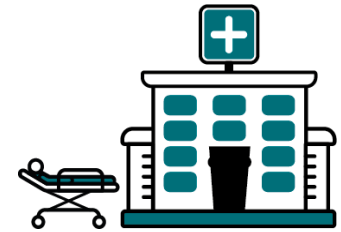
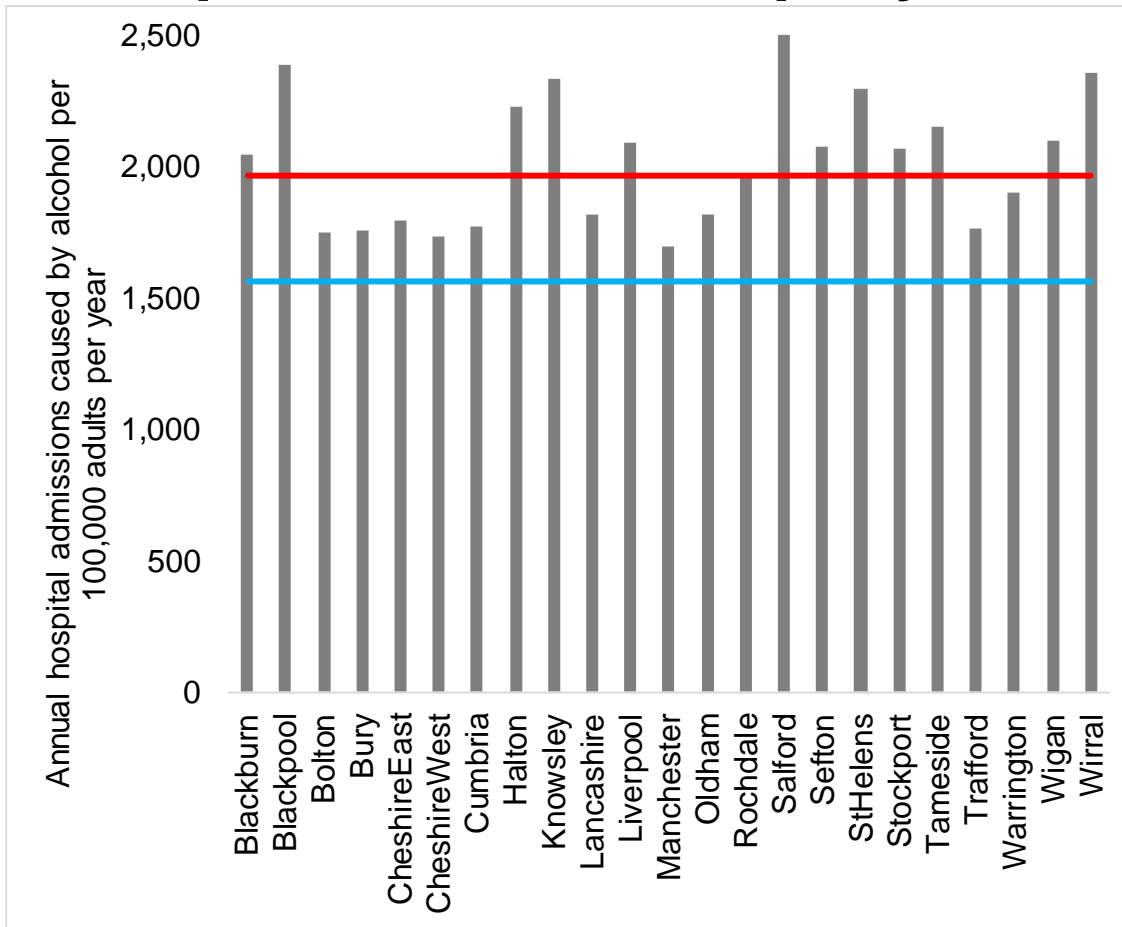


% of all alcohol sold under 50p per unit consumed by drinker group

England

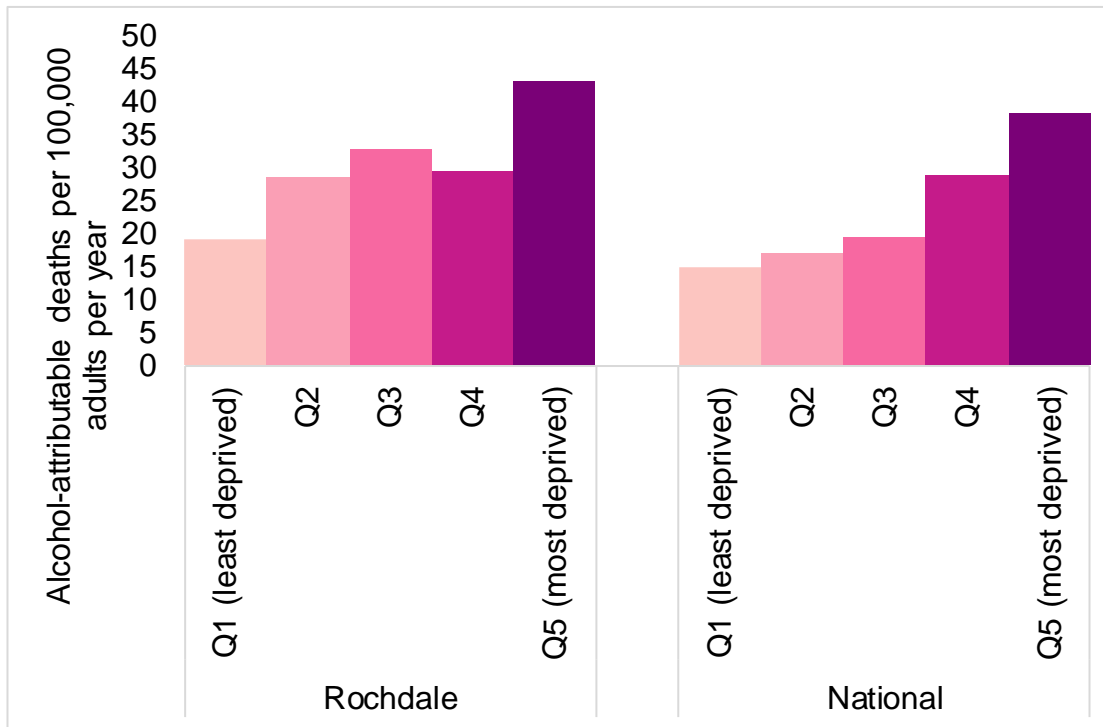


Alcohol attributable hospital admissions per 100,000 adult per year



The **North West** experiences more alcohol related hospitalisations per population than **nationally**

Alcohol-attributable Deaths per 100,000 Adult Population by Index of Multiple Deprivation Quintile



More deprived areas experience higher rates of alcohol attributable deaths – and the gap between rich and poor can be bigger in many LAs than it is nationally

Impact of MUP

Impact of a 50p MUP locally?

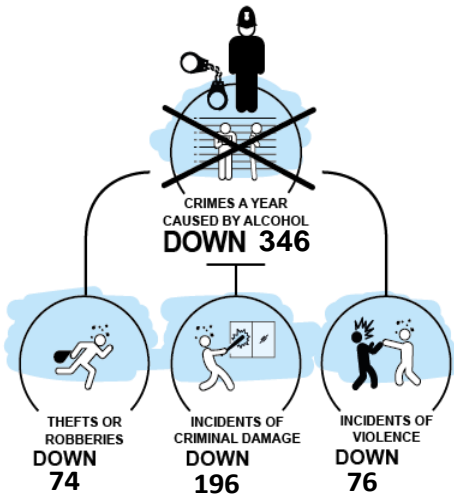
MUP IMPACT



110
DEATHS
PREVENTED
IN THE NEXT 20 YEARS
WITH A 50P MUP

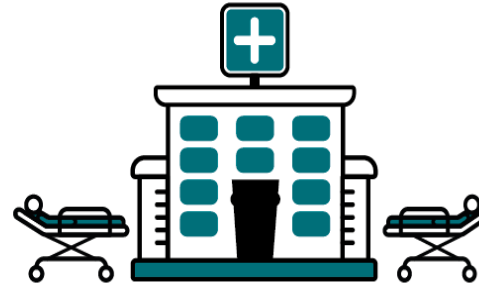
Rochdale

MUP IMPACT



Rochdale

MUP IMPACT



HOSPITAL ADMISSIONS PER YEAR

DOWN 195

Rochdale

MUP IMPACT



SAVE THE NHS

£410,000

A YEAR

Rochdale

Impact of 50p MUP on Average Weekly Alcohol Consumption

MUP IMPACT

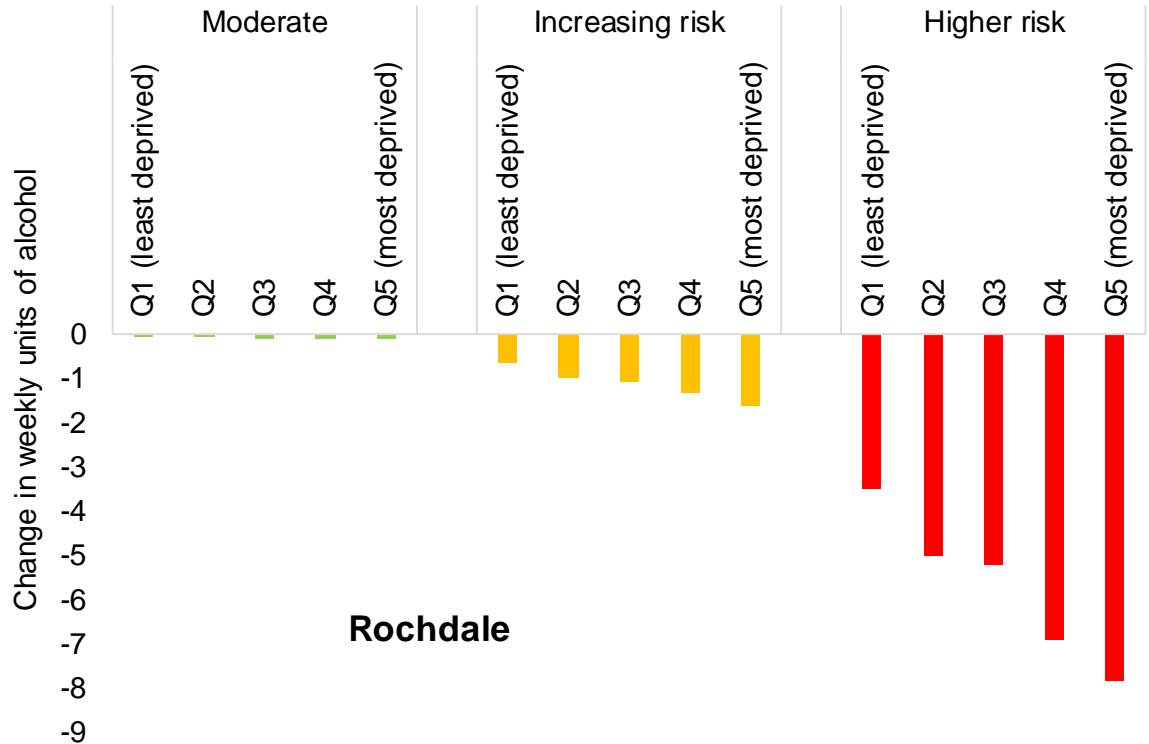
Consumption



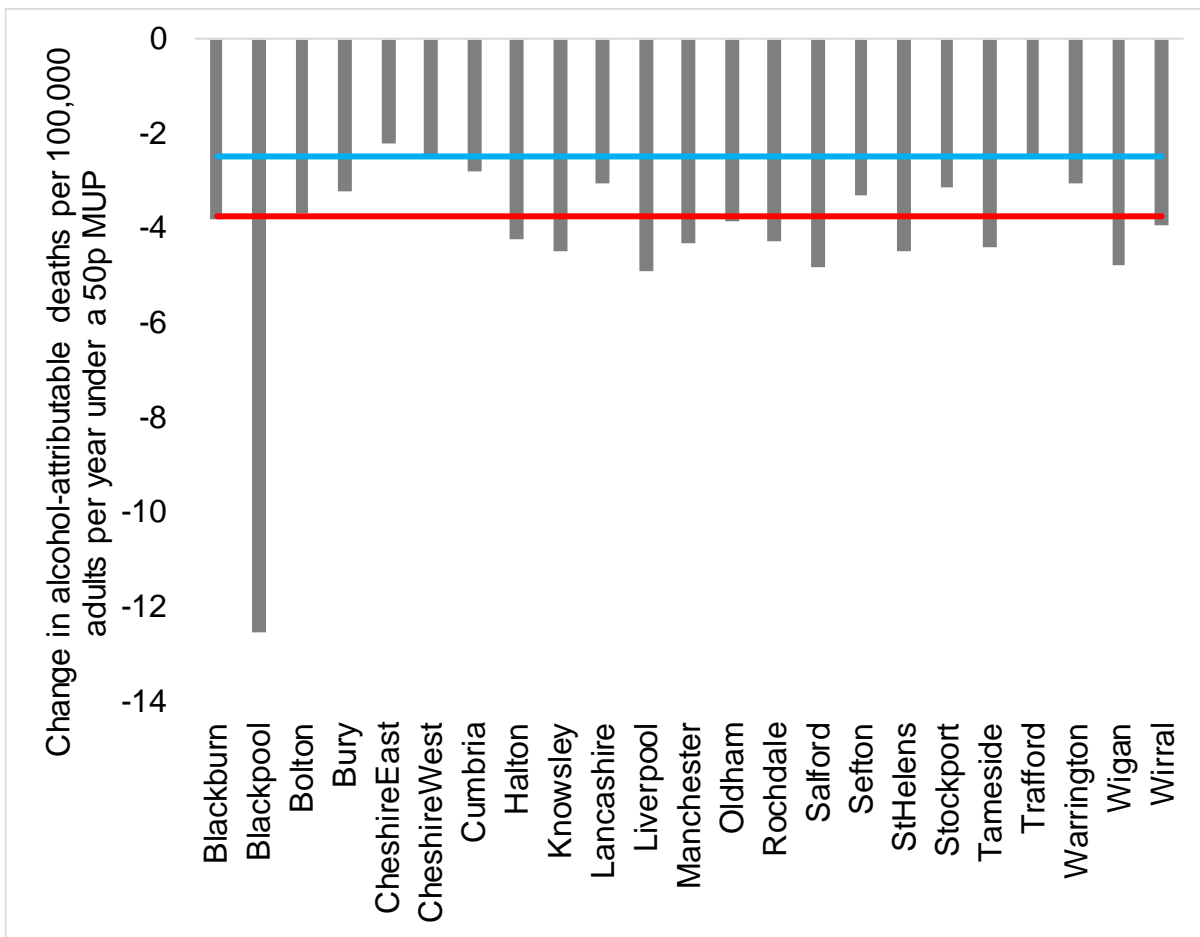
DOWN -5.7%

Rochdale

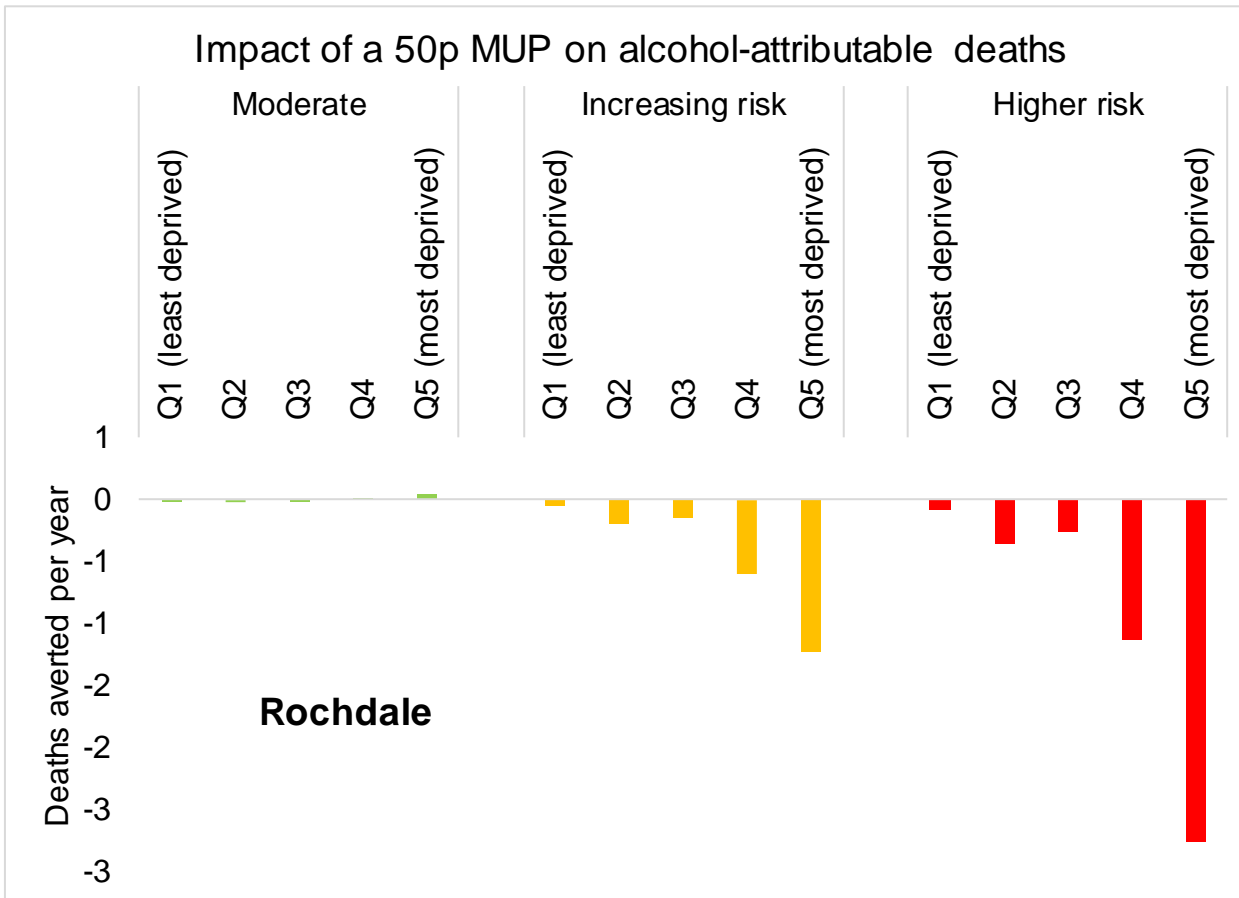
Impact of a 50p MUP on weekly alcohol consumption



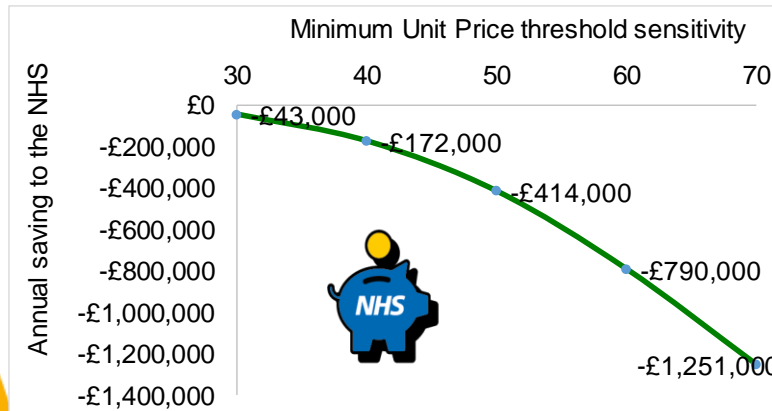
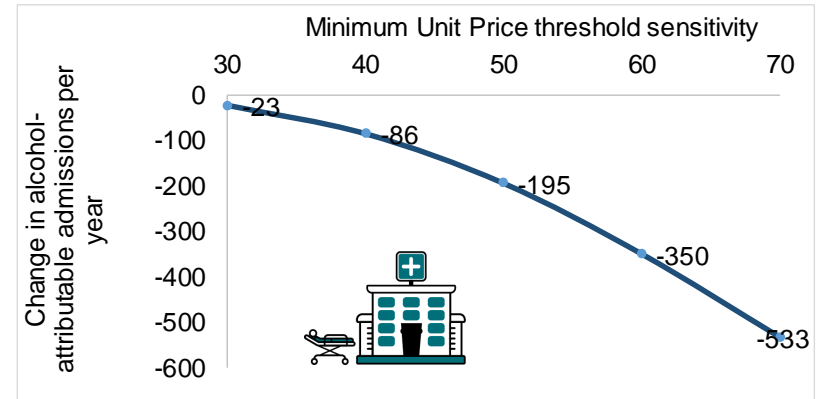
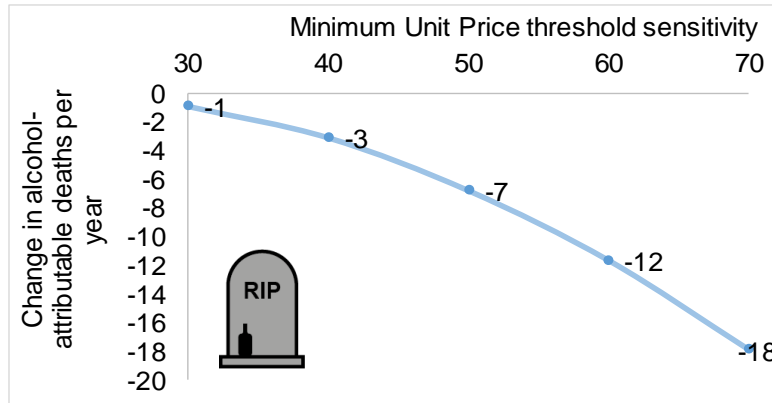
Impact of 50p MUP on alcohol related deaths is bigger in **North West** than **Nationally**



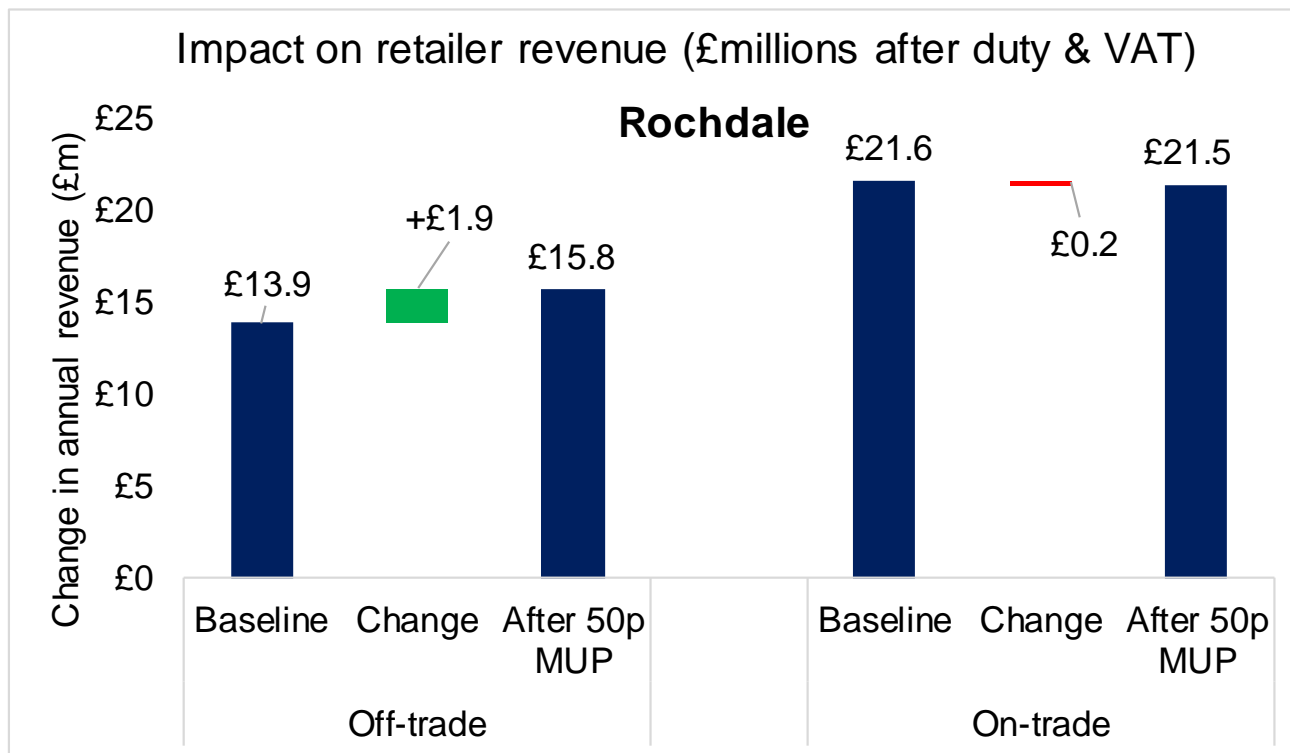
Impact on alcohol related deaths is bigger in higher risk drinkers and in deprived areas



A 50p MUP is around 10 times more effective than a 30p threshold & 2 times more effective than a 40p threshold



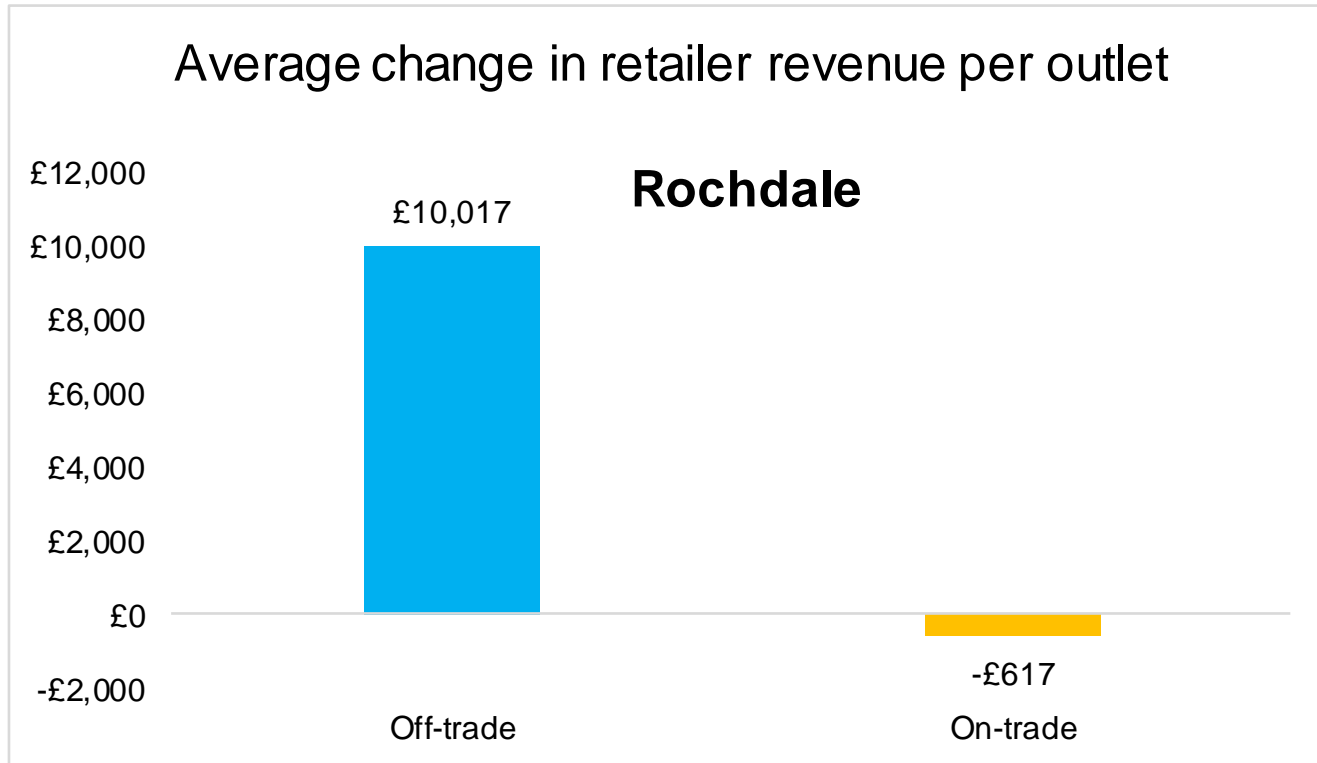
Impact on Alcohol Sales for Business



Off trade retailers would see substantial increased revenue

On trade retailers would see very little change in revenue

Impact on Alcohol Sales for Business



2. Detailed UTLA/Region specific slides



#MUPlocal

Minimum Unit Pricing (MUP)

Exploring the impact of the local implementation of a
minimum price for a unit of alcohol

- the evidence for

Rochdale

What's new?



*National Institute for
Health Research*

**For the first time, there is scientific
evidence at local authority level
about the impact of introducing
Minimum Unit Pricing (MUP)**

This means decision makers can have an
informed view of what the introduction of Minimum
Unit Pricing (MUP) would mean for individuals,
families, communities and services in ...

Rochdale



The
University
Of
Sheffield.

#MUPlocal

20

Robust & objective...

The University of Sheffield, a world top 100 university, has conducted research on alcohol consumption and impact of pricing policies since 2008. Studies have been used by national level decision makers in Scotland, England, Wales, Northern Ireland & Ireland.

The studies in this research programme have been endorsed by the likes of World Health Organisation and UK Medical Research Council. and published in
The Lancet
The British medical Journal

The research team has now used a surveys and market research data to develop estimates of the effect of MUP for **every Upper Tier Local Authority** in the **North** of England.

What happens next is in the hands of decision makers and stakeholders ...

The position of the University of Sheffield is objective:

this report sets out the facts and the research findings so that
Local Politicians, Local Authority CEOs, Directors of Public Health,
Police and Crime Commissioners, and the wider community with a stake in
reducing alcohol-related harm:

**understand
the local
authority-level
research
findings**

**make an
informed
decision about
any next steps,
based on the
data.**

What's the problem?

High alcohol consumption affects health and increases the numbers of

- early deaths and
- hospital admissions

Due to causes everyone knows are linked to drinking e.g.

- alcohol poisoning and
- liver disease

But also other diseases

- throat & breast cancer
- stroke, heart disease, accidental falls and fires.

- Increased crime including violent incidents, thefts and robberies, and incidents of criminal damage
- Impacts work productivity, sickness absence and the economy
- Some children living with people drinking at increased risk consequently require social services support or get taken into care

Whose problem?

Individuals from all parts of the community are affected:

- **not just the young but the middle aged and older people**
- **not just poorer people but also middle income and richer people.**

Drinking also affects other people not only the drinker:

- **victims of crime**
- **family & friends of people with health problems**
- **employers and workmates**

Units of alcohol: 10ml (2 teaspoons) pure ethanol



Pint
≈ 2 units

Beer
(4% ABV)



Glass
≈ 2 units

Wine
(12% ABV)



Measure
≈ 1 unit

Whiskey
(40% ABV)

Drinker type	Units per week	
	Men	Women
Moderate	14 or under	14 or under
Increasing Risk	Above 14 – 50	Above 14 – 35
High Risk	Above 50	Above 35

What is MUP?

MUP sets in law a minimum price for a unit of alcohol. It is highly targeted at heavy drinkers. Level discussed is 50p (as in Scotland).

The cheapest shop bought alcohol would have to rise in price. Bars & restaurants unaffected, they sell alcohol above this price.

					
	440 ml beer (4.0%)	750 ml wine (13.0%)	700 ml vodka (37.5%)	440 ml cider (5.0%)	3L strong cider (7.5%)
Units	1.8	9.8	28	2.2	22.5
Price now	£0.66	£5.99	£10.00	£0.66	£3.69
Price if 50p MUP	£0.88	£4.88	£14.00	£1.10	£11.25
Increase	+22p	none	+£4.00	+34p	+£7.56

Minimum pricing in the UK



50p MUP implemented
1st May 2018
Sunset clause ends
policy in 2024



Legislation passed
Consulting on level
Implementing in
summer 2019



Review on-going
No immediate
movement expected



Committed to policy
Power-sharing
assembly currently
suspended

EVIDENCE: Does price really affect people's drinking behaviours?

- Price is the most well evidenced effective intervention for reducing alcohol consumption and harms.
- Over 140 research studies have shown increasing price to be effective in reducing consumption and harms.
- Typically these 'price elasticity' studies show a 10% increase in price produces a -5% decrease in purchasing.

EVIDENCE: Does price really affect people's drinking behaviours?

- Research shows MUP targets price rises at the cheapest alcohol leaving other products unaffected, focusing on people who drink very large amounts of cheap alcohol.
- Something similar to MUP exists in Canada and evidence shows it reduces purchasing, hospital admissions & deaths.
- Evaluations set up in Scotland will look at all of this in UK context

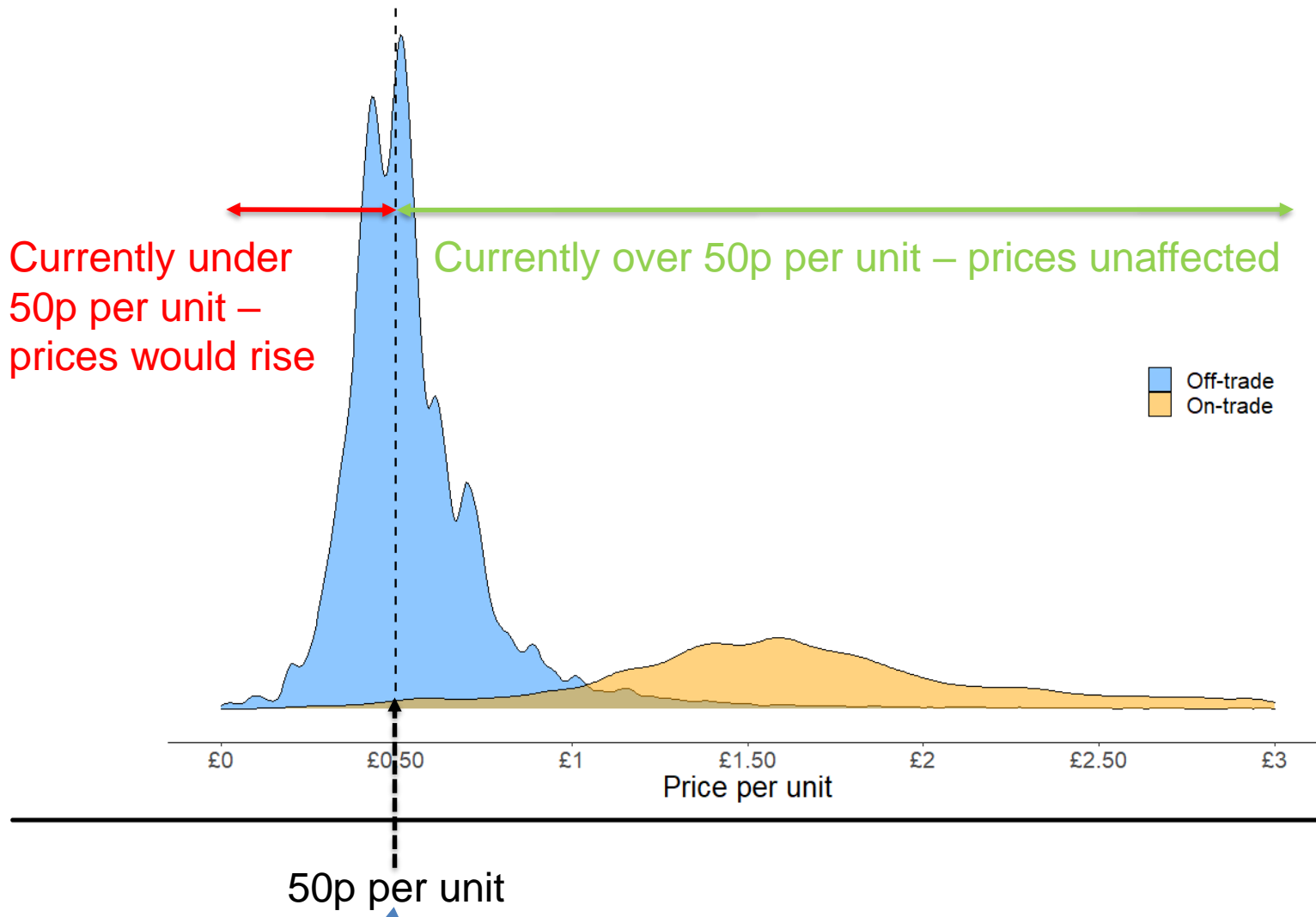
MUP Impact on Alcohol Trade

MUP will mostly affect shops and supermarkets, with the prices of their cheapest alcohol rising to the new minimum, and providing them with **additional revenue**.

Minimum Unit Pricing **could** possibly provide a small boost for pubs, bars and restaurants. People could switch to buy more of their alcohol in the 'on-trade'.

50p MUP affects ...

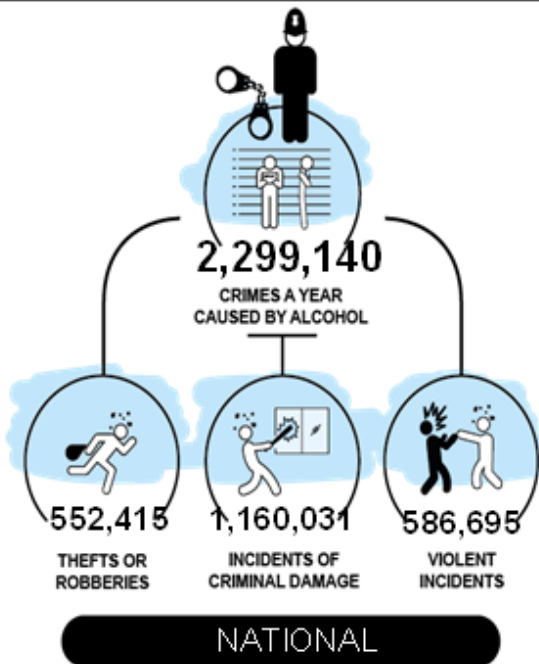
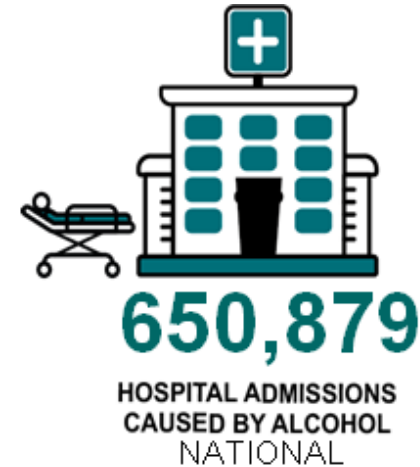
supermarket & shop bought alcohol (off-trade) and
does NOT really affect pubs & bars (on-trade)



Infographics on scale of problem & effect of MUPLocal

What this means for the nation

Scale of the national problem



NATIONAL

What this means for the nation – social and business burden

82,400
FAMILIES
WITH
CHILDREN



IN CONTACT WITH SOCIAL SERVICES AND
WHERE ALCOHOL IS IDENTIFIED AS A FACTOR

NATIONAL



7.7million

DAYS OFF WORK A YEAR
DUE TO ALCOHOL CONSUMPTION

ENGLAND

Impact of 50p MUP for England?

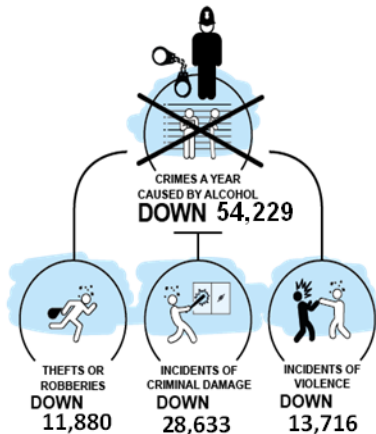
MUP IMPACT



16369
DEATHS PREVENTED
IN THE NEXT 20 YEARS
WITH A 50P MUP

NATIONAL

MUP IMPACT



NATIONAL

MUP IMPACT



HOSPITAL ADMISSIONS PER YEAR
DOWN 29,943

NATIONAL

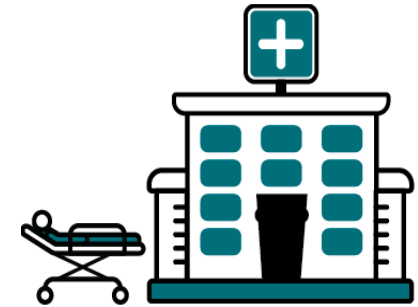
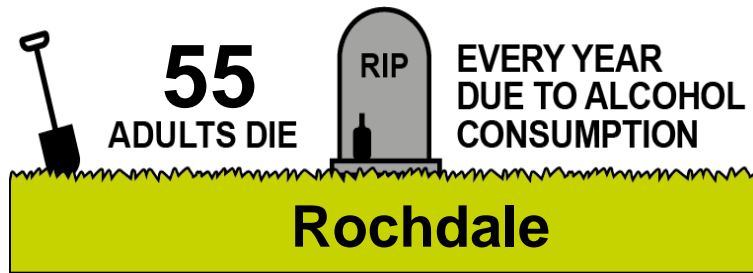
MUP IMPACT



SAVE THE NHS
£71,630,000
A YEAR

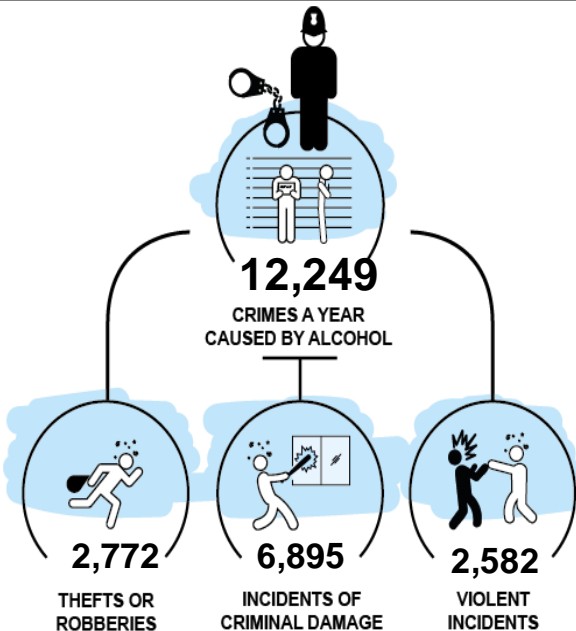
NATIONAL

The scale of the local problem



3,137

HOSPITAL ADMISSIONS
CAUSED BY ALCOHOL
Rochdale



Rochdale



ALCOHOL
COSTS THE NHS
£14,650,000
A YEAR

Rochdale

Impact of a 50p MUP locally?

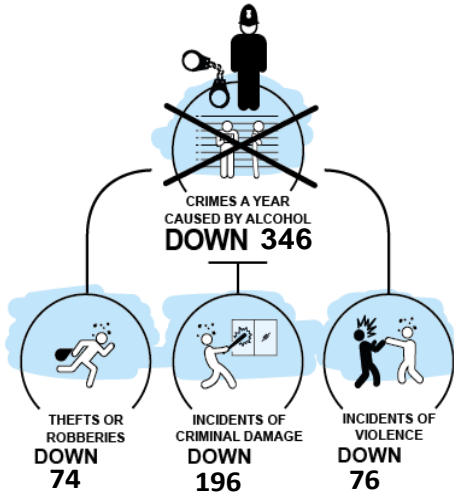
MUP IMPACT



110
DEATHS
PREVENTED
IN THE NEXT 20 YEARS
WITH A 50P MUP

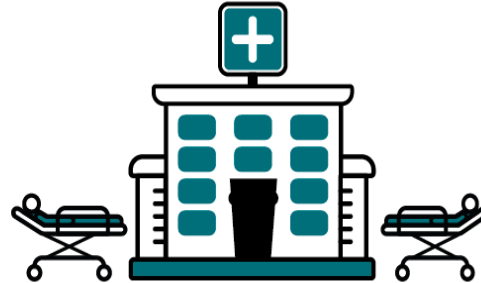
Rochdale

MUP IMPACT



Rochdale

MUP IMPACT



HOSPITAL ADMISSIONS PER YEAR

DOWN 195

Rochdale

MUP IMPACT



SAVE THE NHS

£410,000

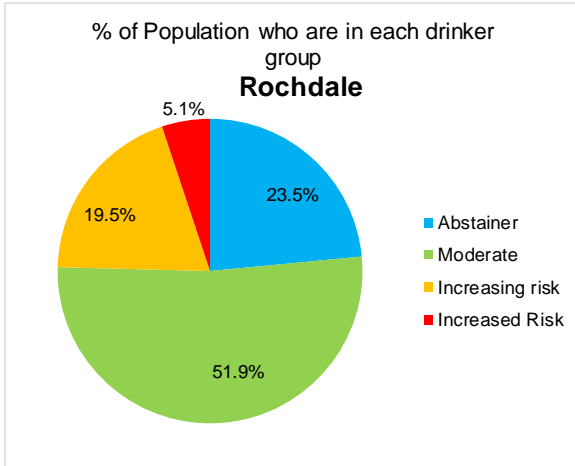
A YEAR

Rochdale

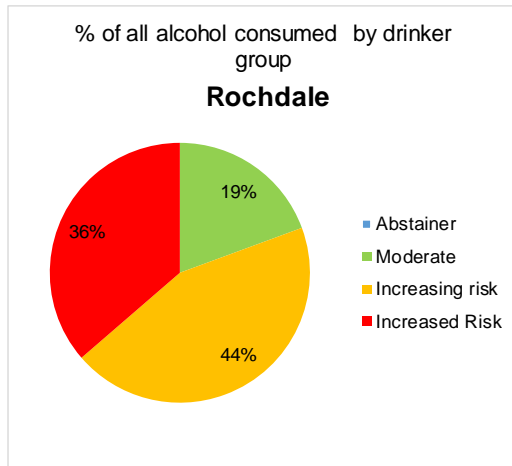
Graphs on scale of problem & effect of MUPLocal

In Rochdale

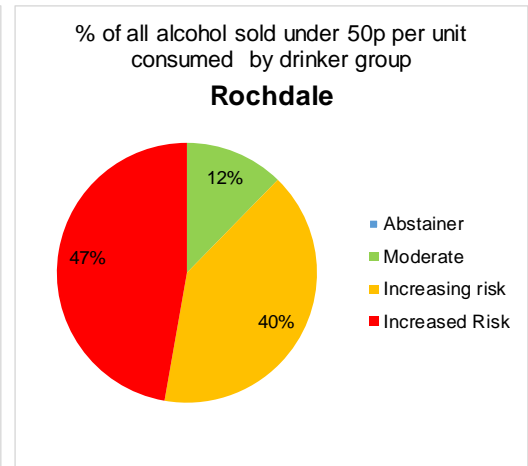
5.1% of people drink at high risk levels



They drink **36%** of all alcohol

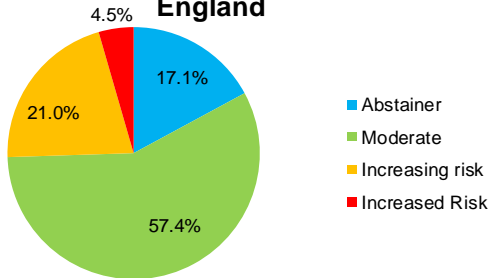


They drink **47%** of the cheap alcohol sold below 50p per unit



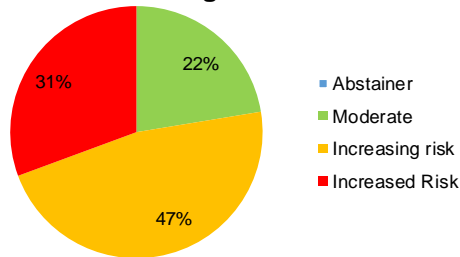
% of Population who are in each drinker group

England



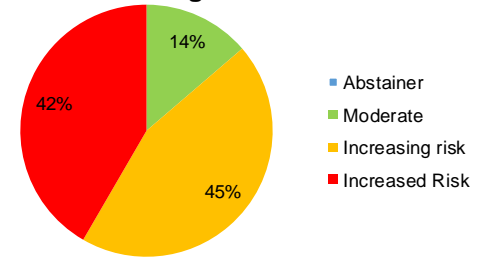
% of all alcohol consumed by drinker group

England

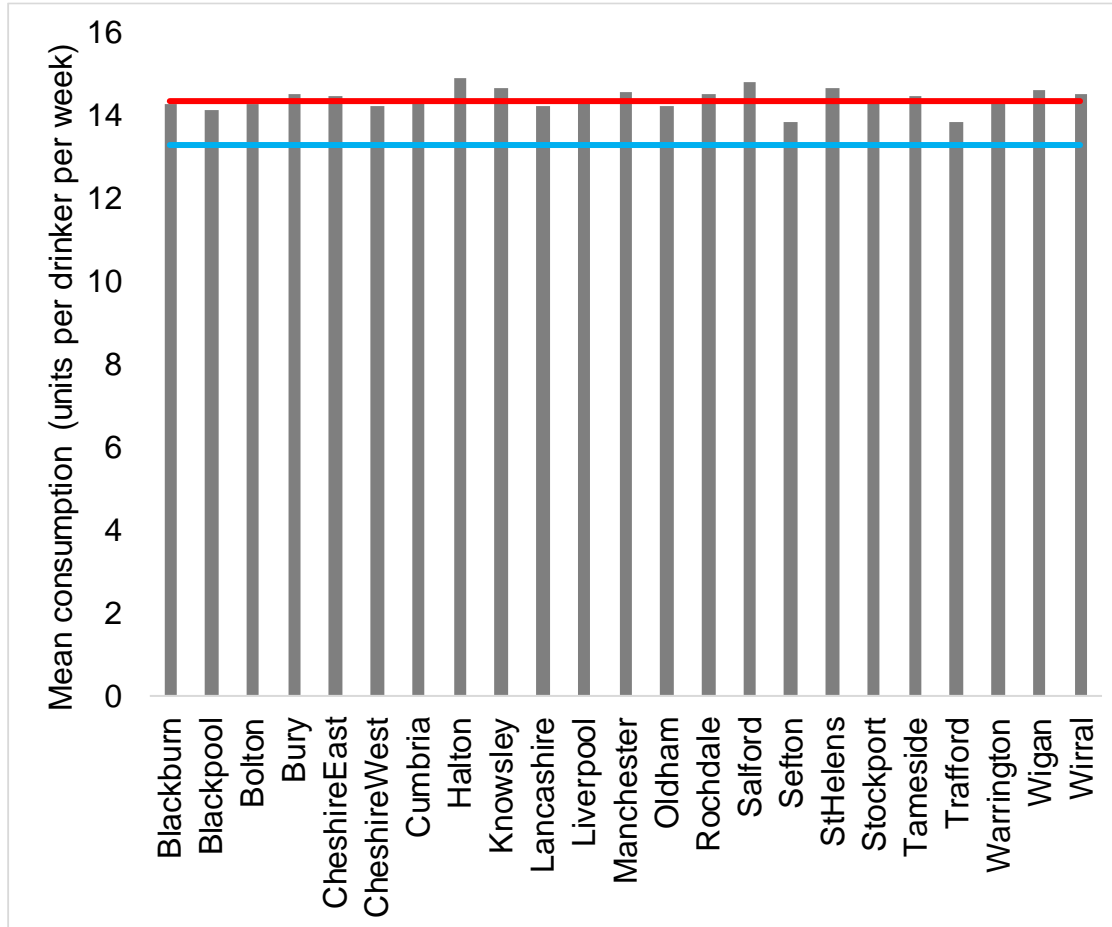


% of all alcohol sold under 50p per unit consumed by drinker group

England

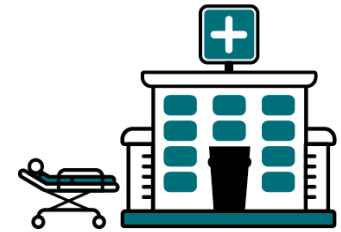
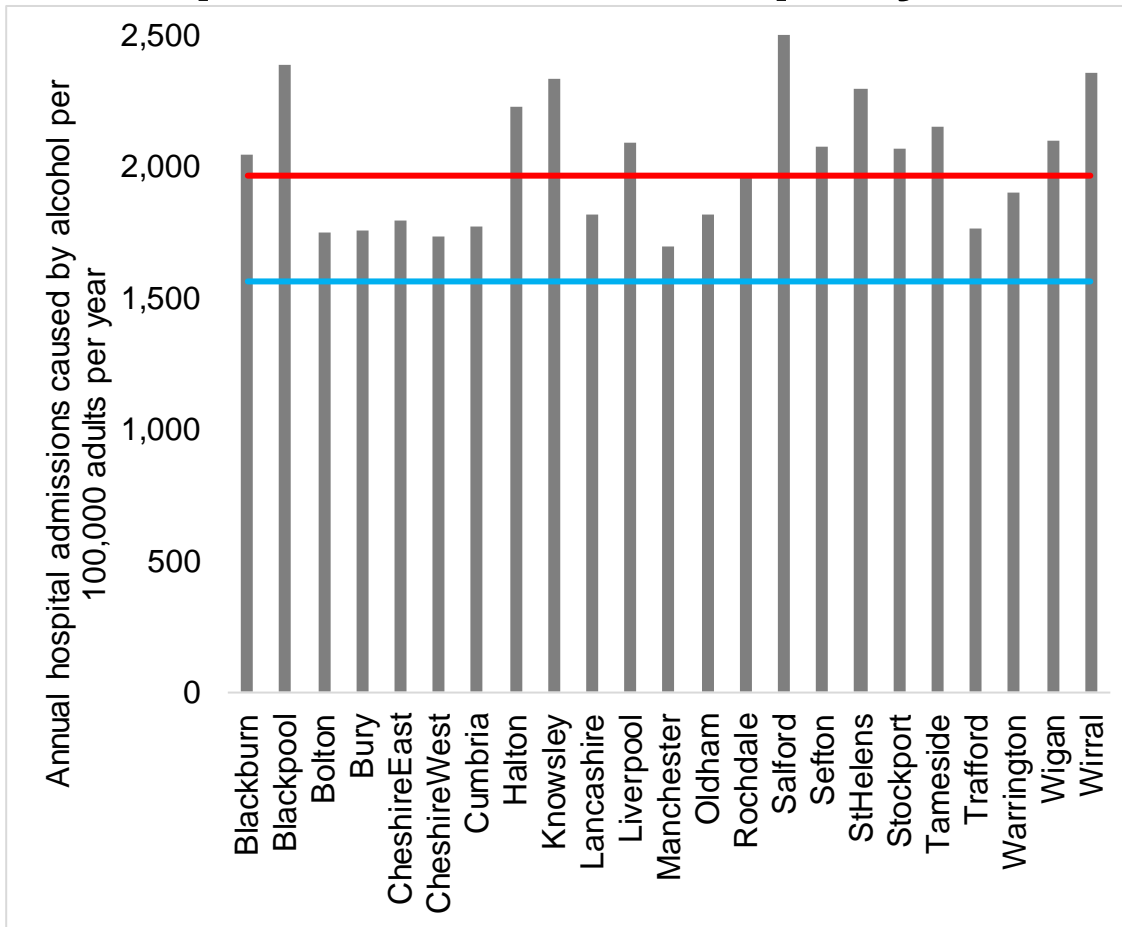


Mean Weekly Consumption (Units) vs National and Regional Average



The **North West** drinks more alcohol per drinker than **nationally**

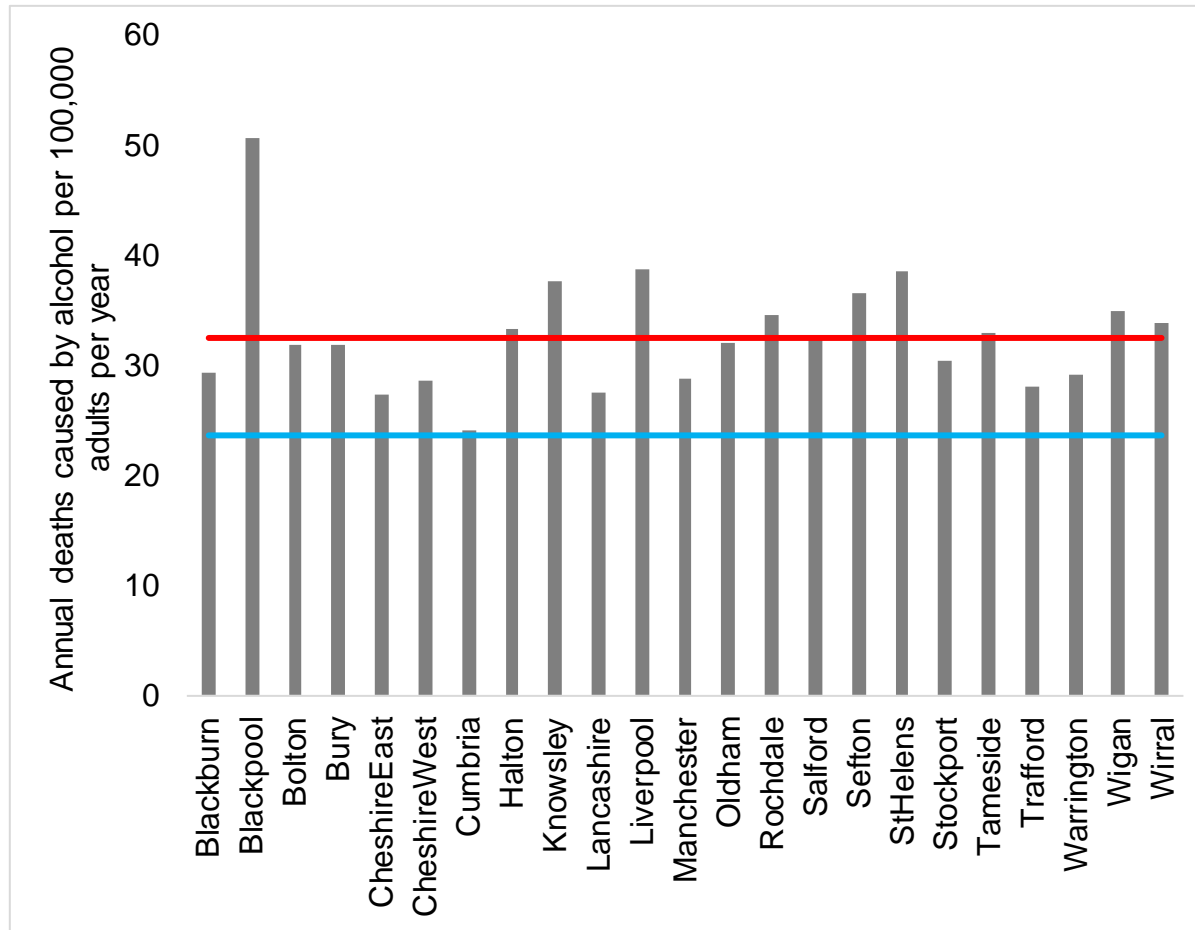
Alcohol attributable hospital admissions per 100,000 adult per year



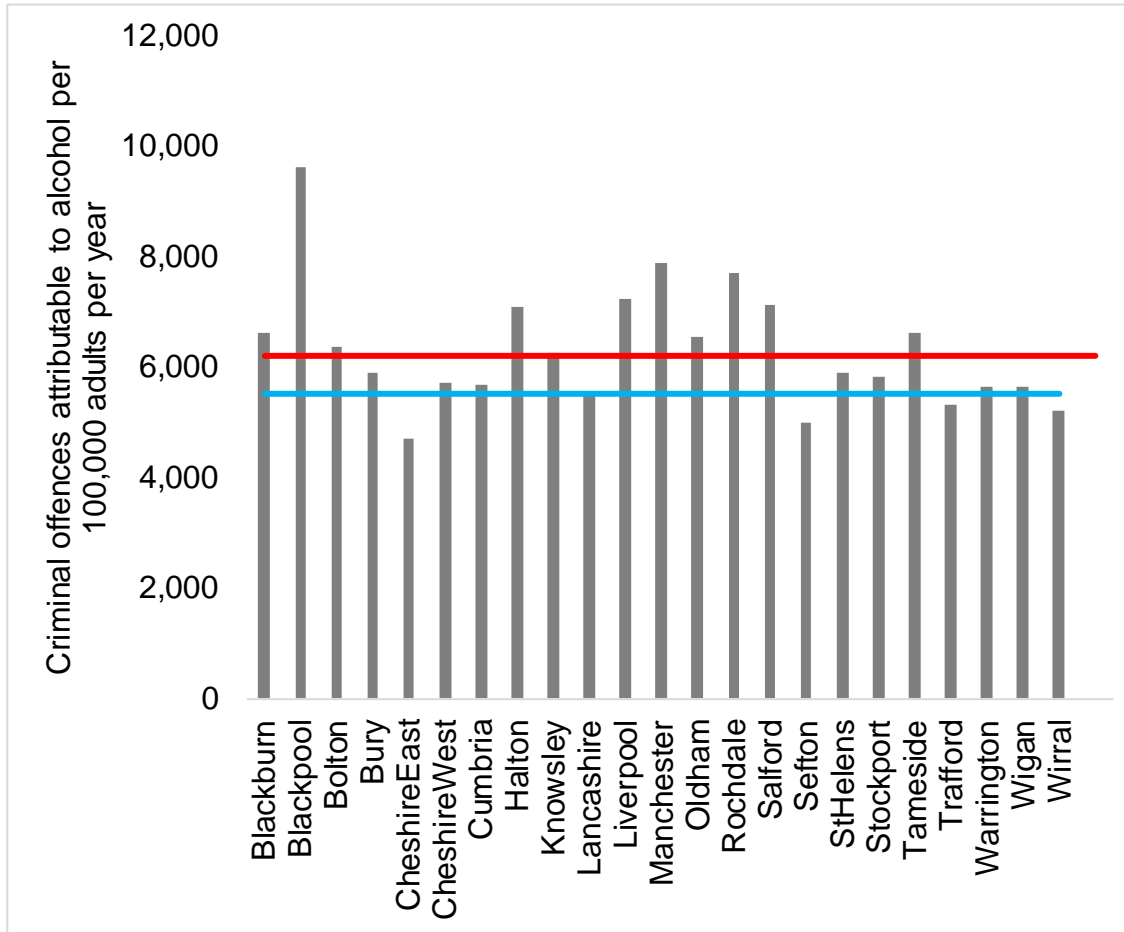
The **North West** experiences more alcohol related hospitalisations per population than **nationally**

Alcohol attributable death rate

The **North West** experiences more alcohol related deaths per population than **nationally**



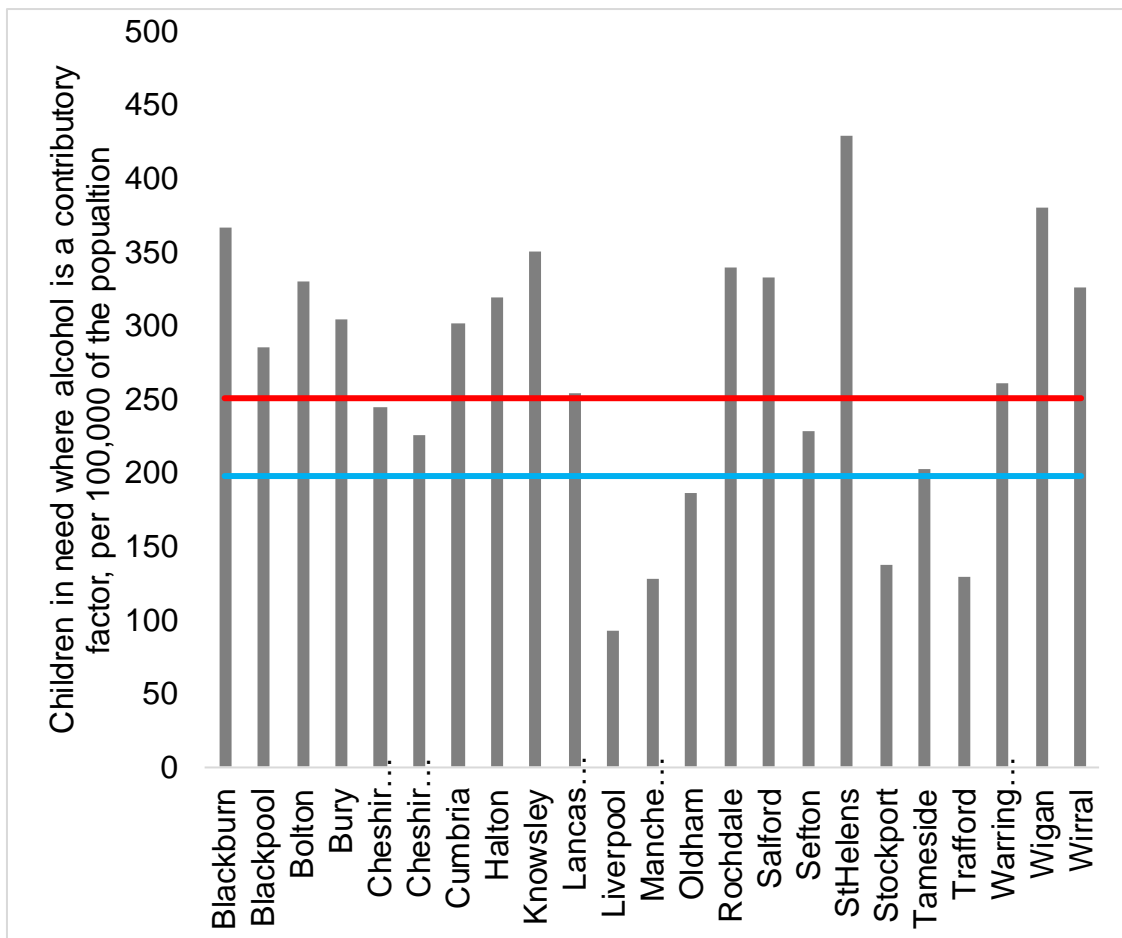
Alcohol attributable crime rate



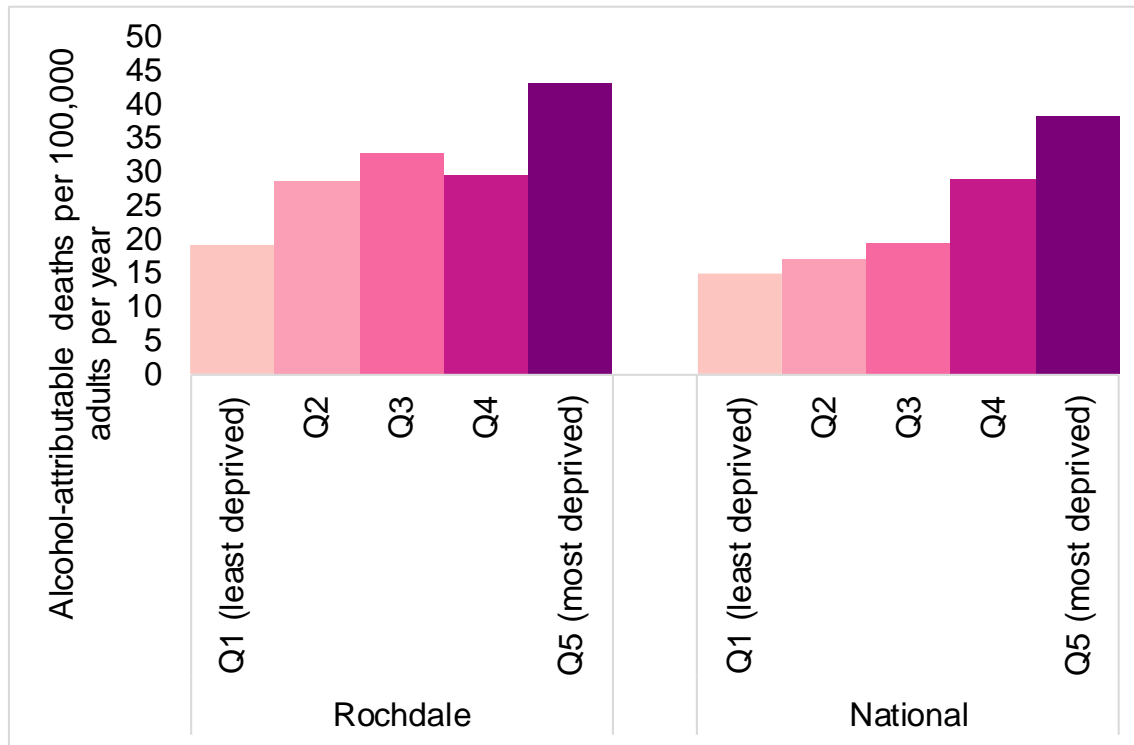
The **North West** experiences more alcohol related crime per population than **nationally**

Rate of Children in Need (i.e. in contact with social services) cases where alcohol is a contributory factor per 100,000 adults in LA

The **North West** has a higher rate of children in contact with social services where alcohol is a factor than **nationally**

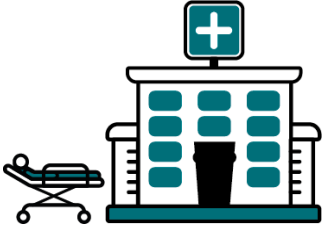
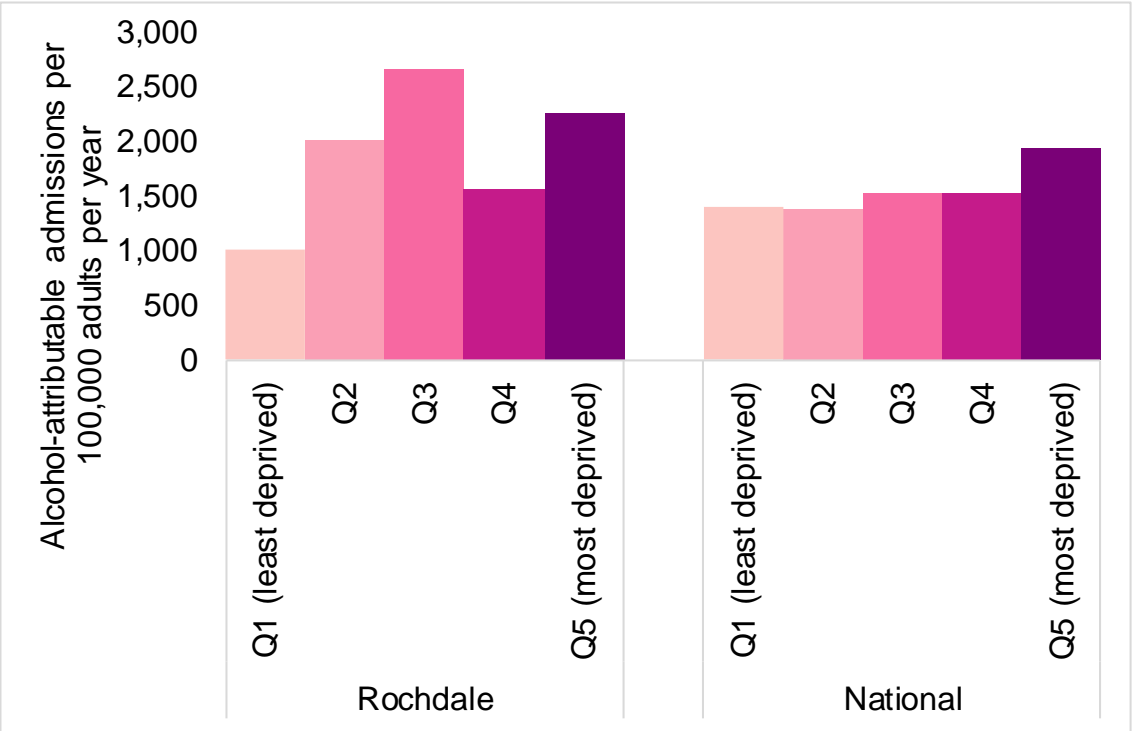


Alcohol-attributable Deaths per 100,000 Adult Population by Index of Multiple Deprivation Quintile



More deprived areas experience higher rates of alcohol attributable deaths – and the gap between rich and poor can be bigger in many LAs than it is nationally

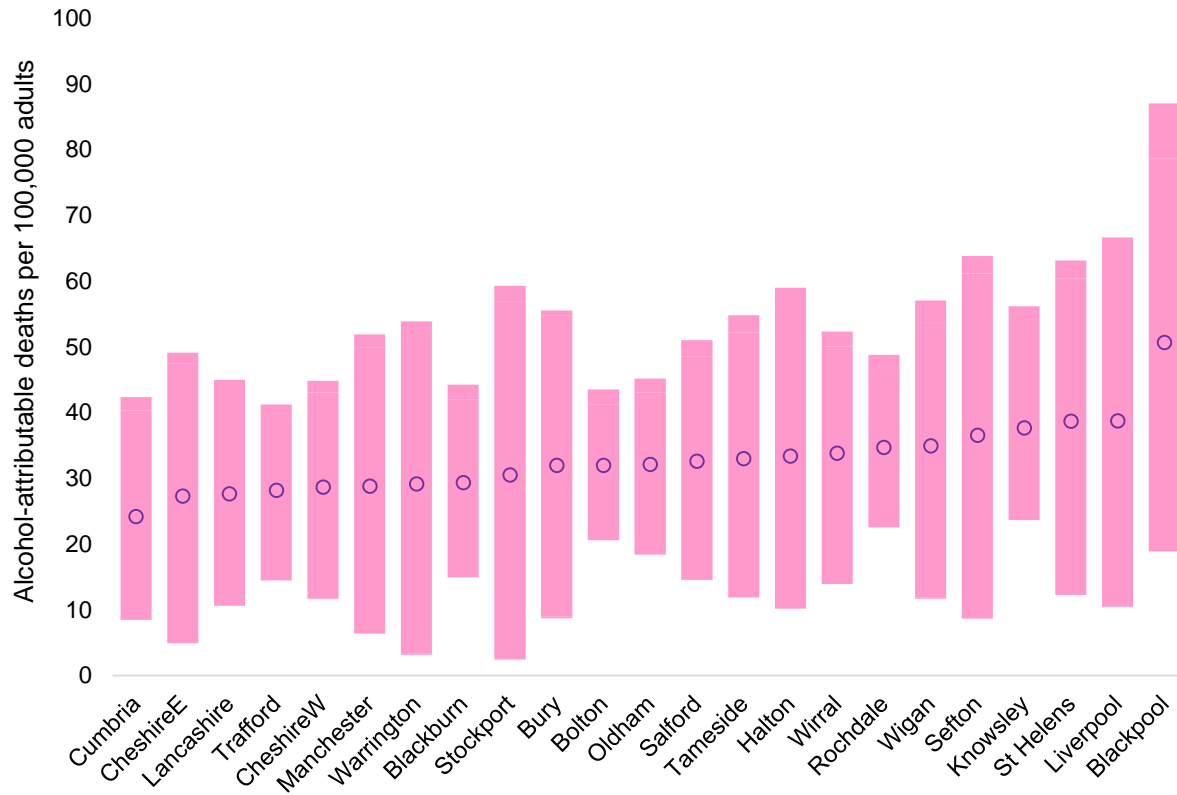
Alcohol attributable hospital admissions per 100,000 Adult Population by Index of Multiple Deprivation Quintile



More deprived areas experience higher rates of alcohol attributable hospital admissions – and the gap between rich and poor can be bigger within many LAs than it is nationally

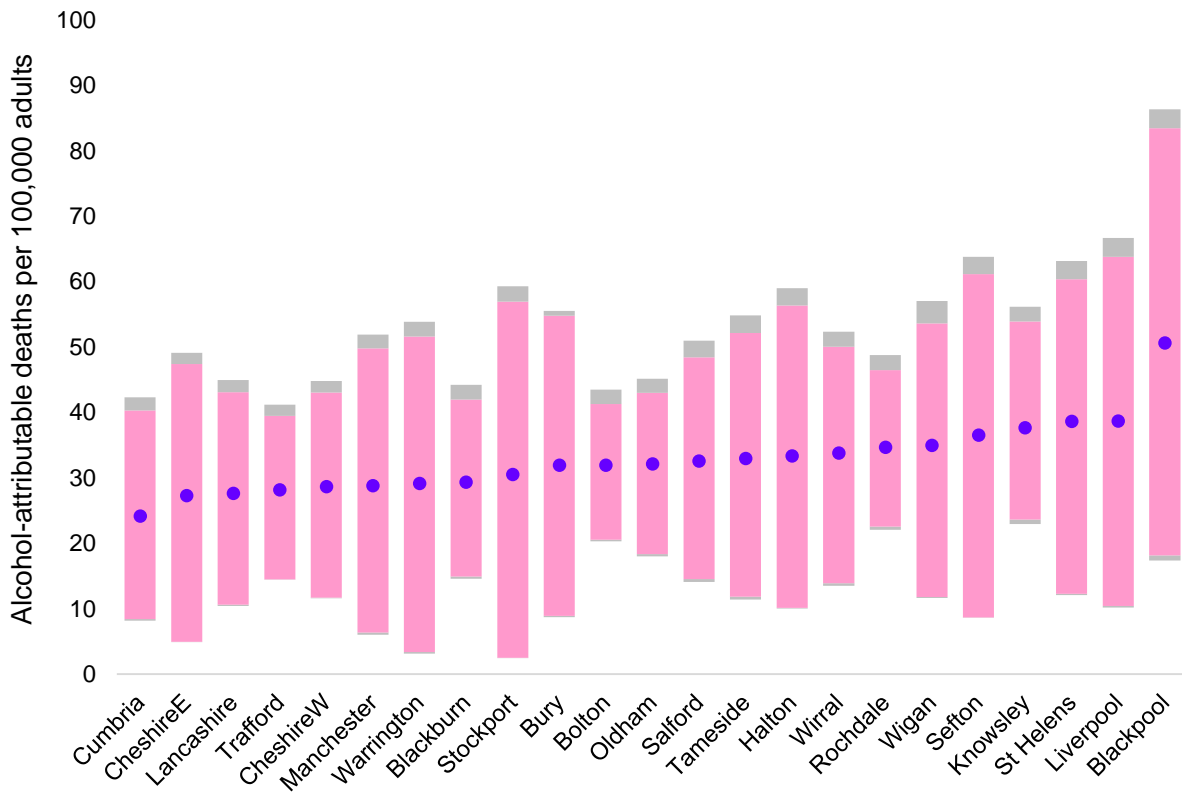
Slope index of inequality:- Difference between most-deprived 1% versus least deprived 1% of people shows substantial inequality in deaths from alcohol

North West



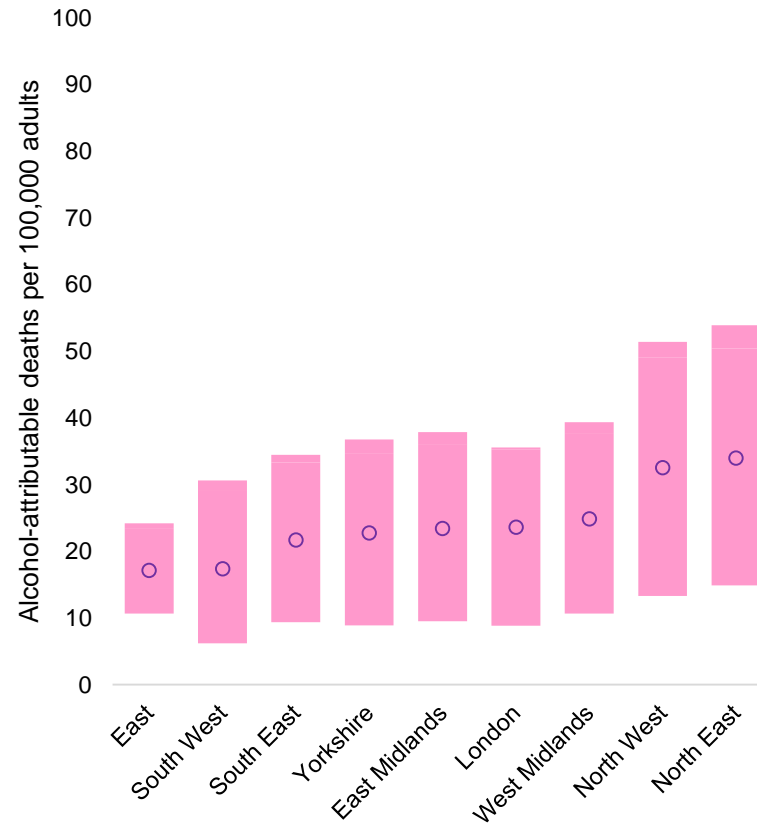
Impact of 50p MUP on inequality:- Difference between most-deprived 1% versus least deprived 1% of people in deaths from alcohol would reduce

North West



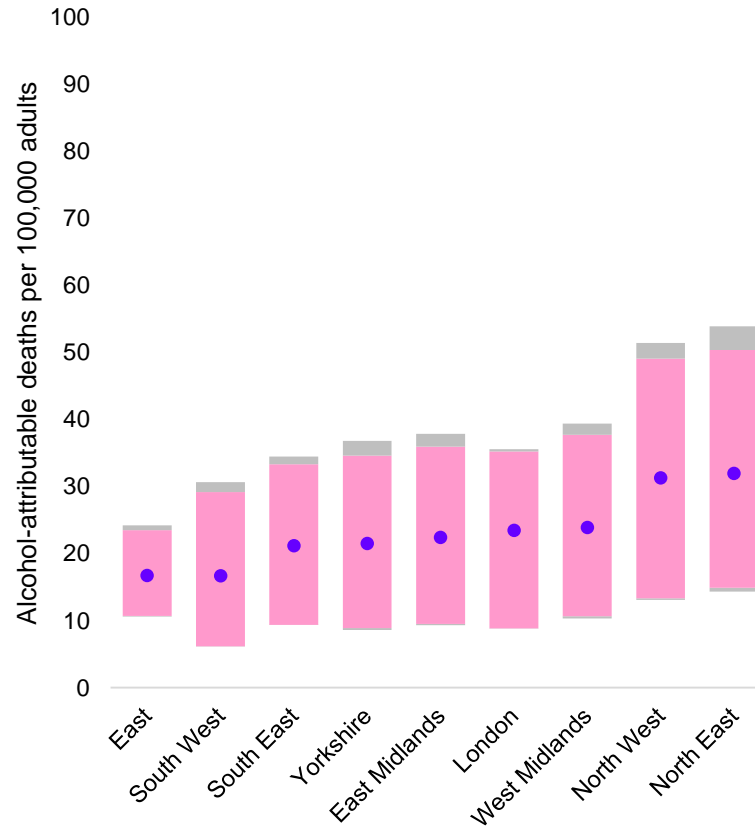
Slope index of inequality:- Difference between most-deprived 1% versus least deprived 1% of people shows substantial inequality in deaths from alcohol

Across
Regions



Impact of 50p MUP on inequality:- Difference between most-deprived 1% versus least deprived 1% of people in deaths from alcohol would reduce

Across
Regions



Current Average Weekly Consumption by drinker group

Consumption



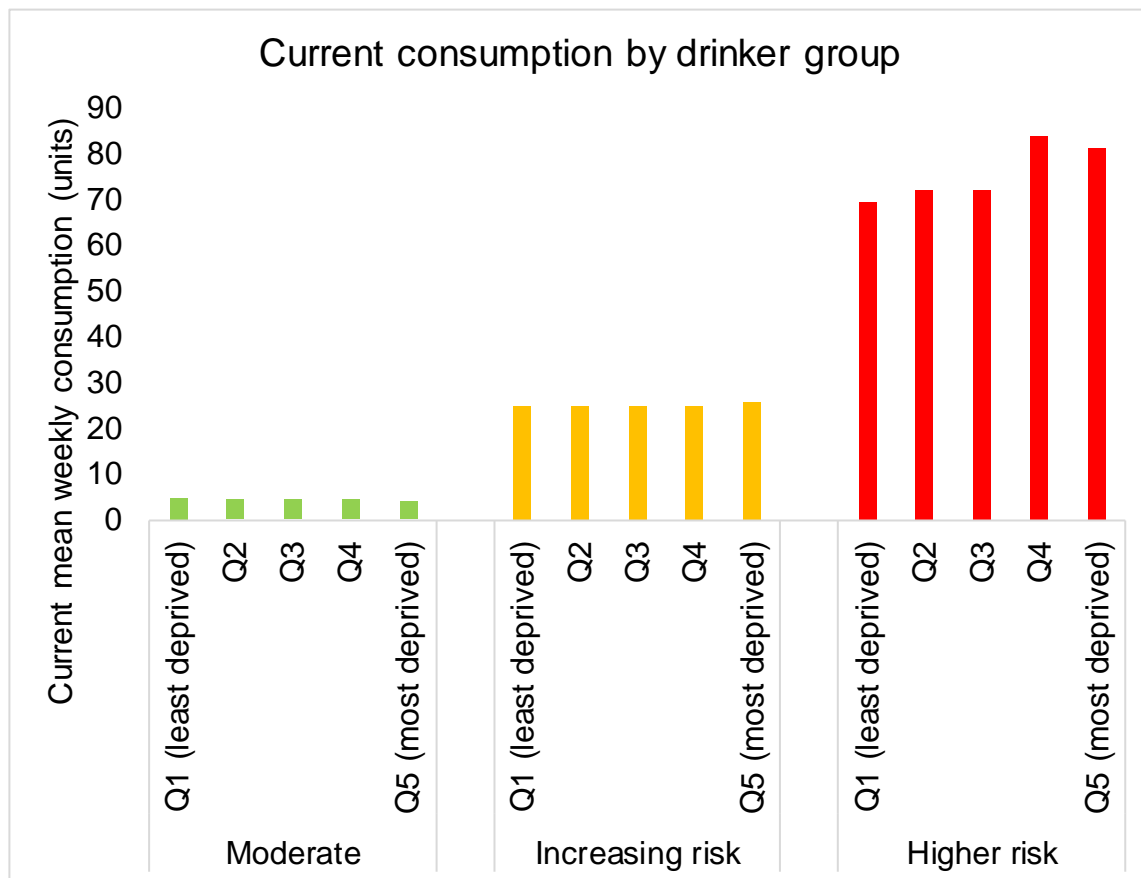
Current weekly units

4.2

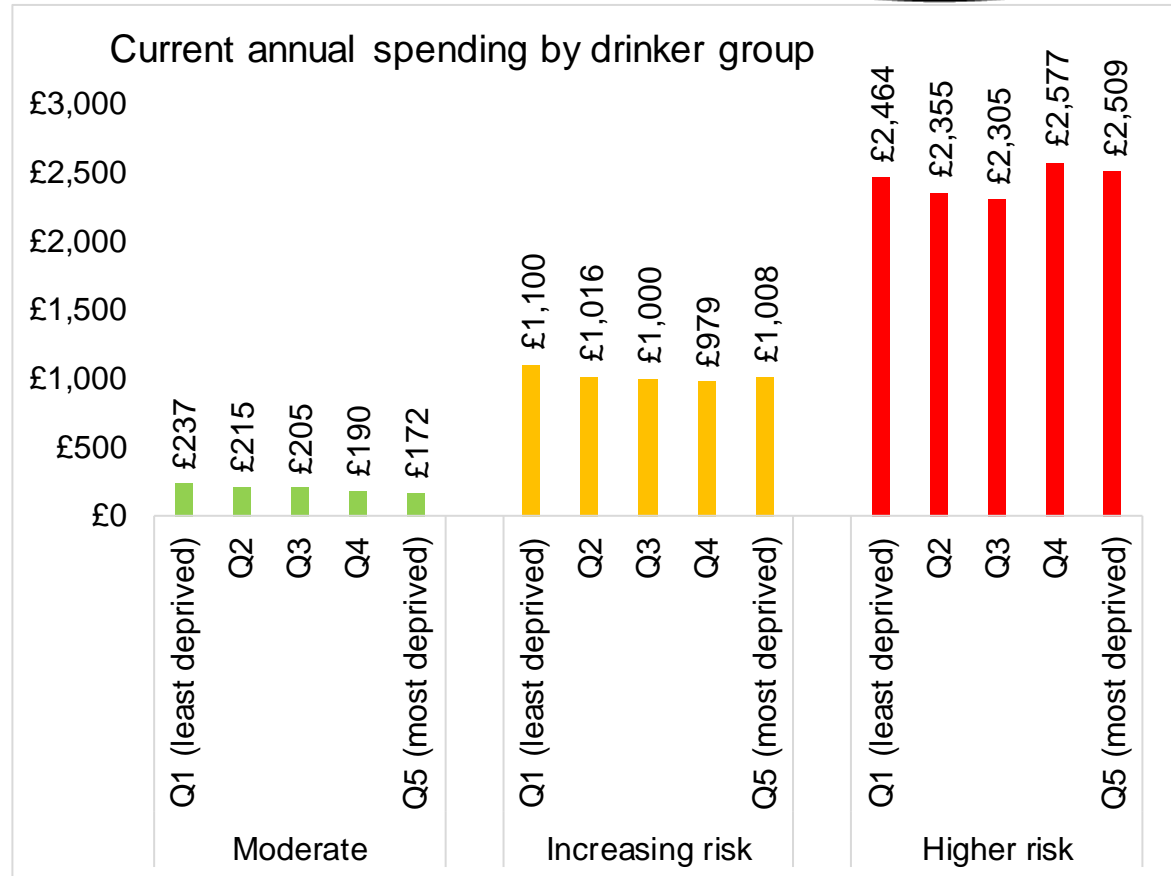
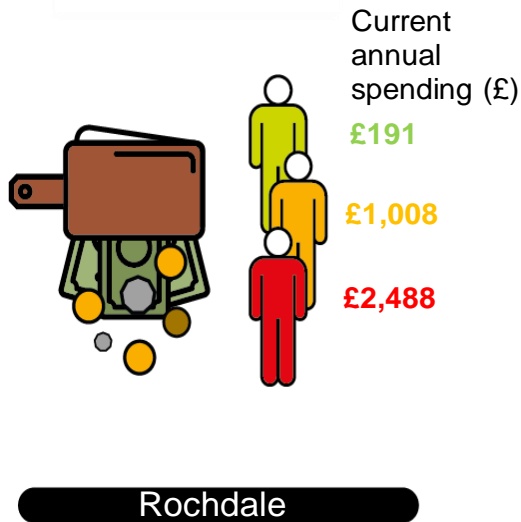
25.3

79.2

Rochdale



Current Annual Spending by drinker group



Impact of 50p MUP on Average Weekly Alcohol Consumption

MUP IMPACT

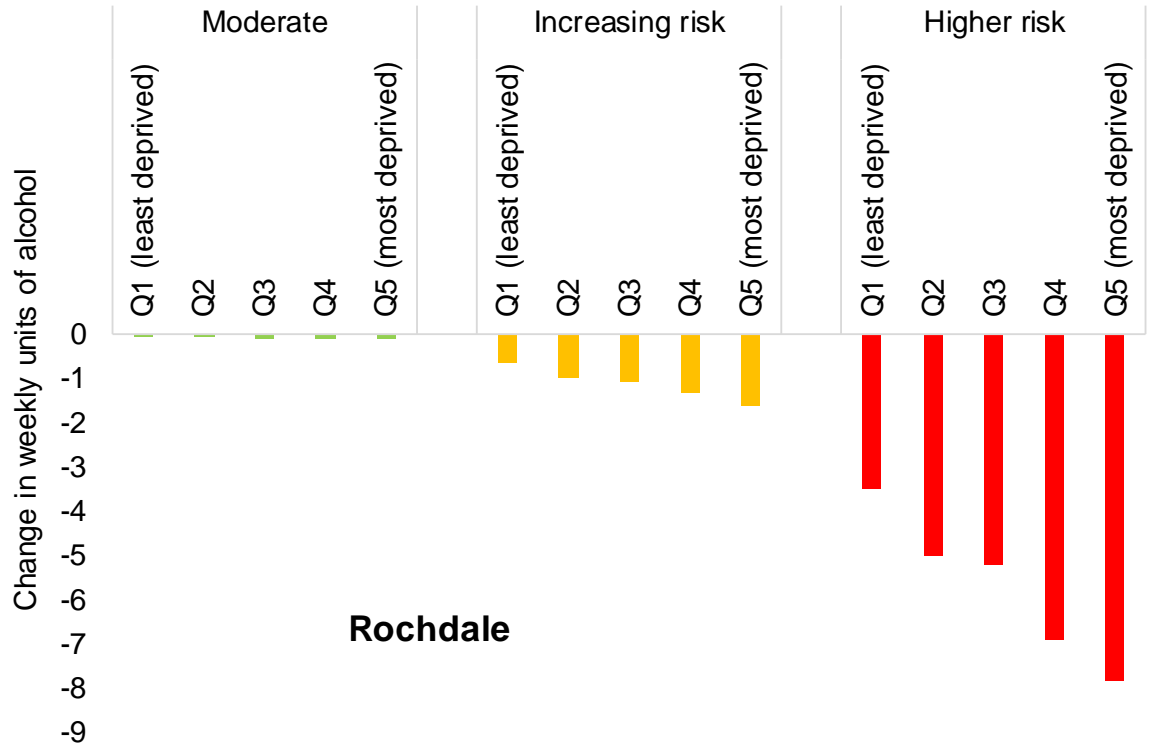
Consumption



DOWN -5.7%

Rochdale

Impact of a 50p MUP on weekly alcohol consumption



Impact of 50p MUP on Annual Spending by drinker group

MUP IMPACT

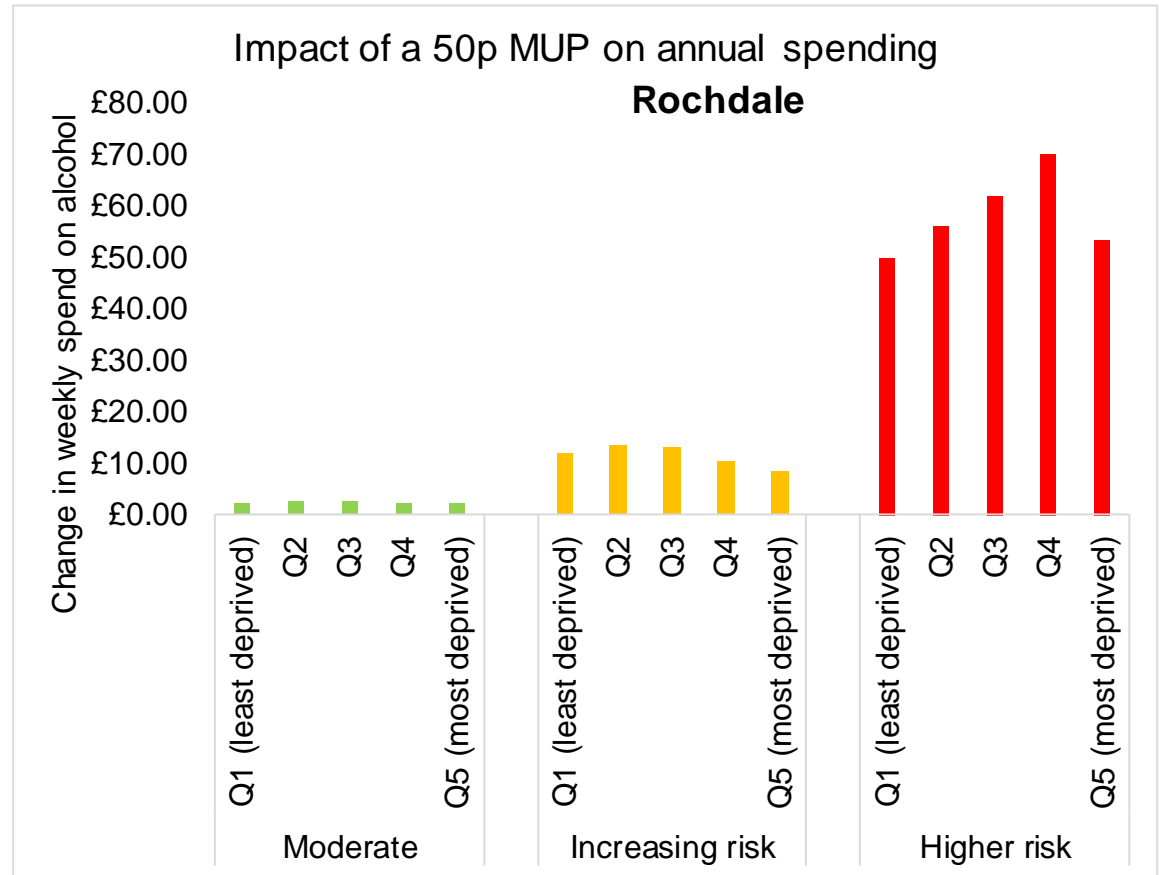
Change in annual spending

£2.36

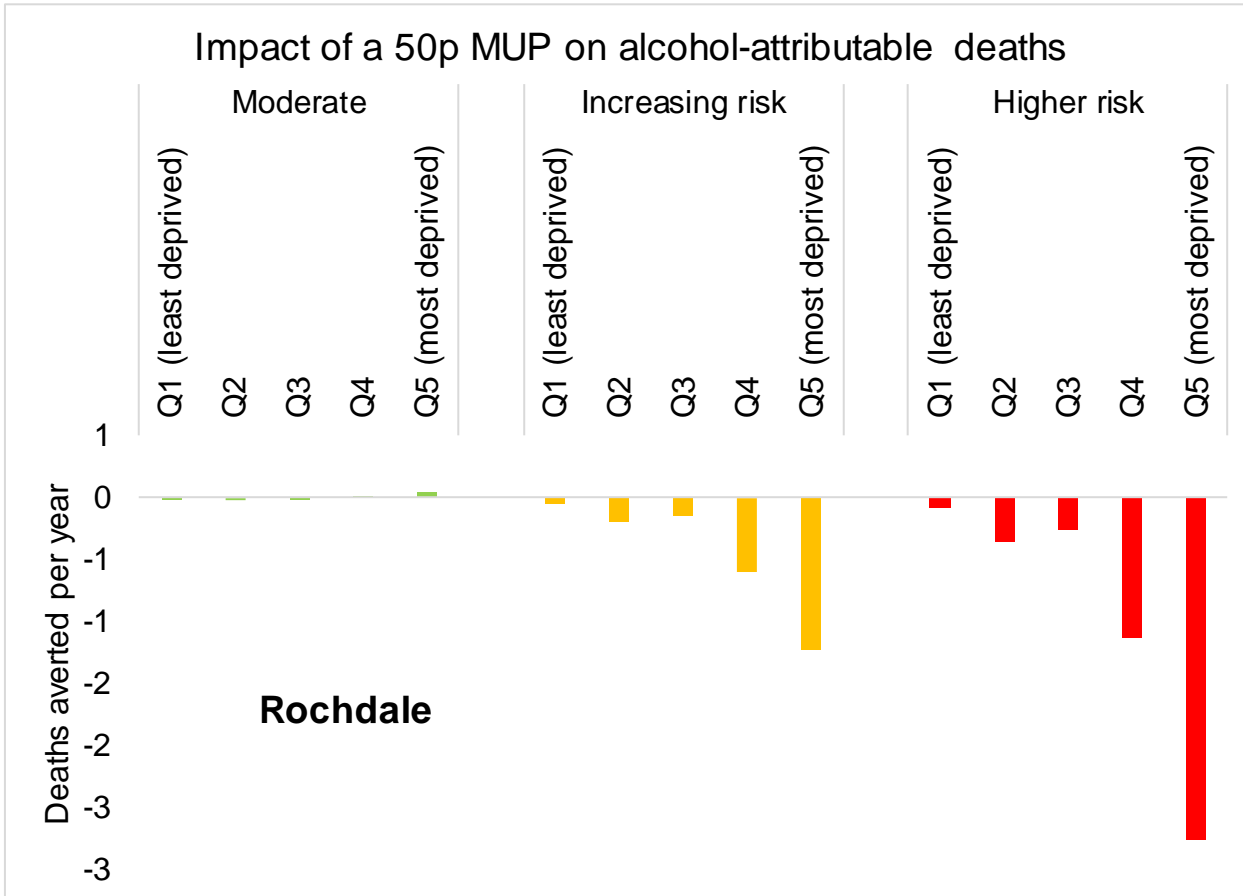
£10.53

£59.09

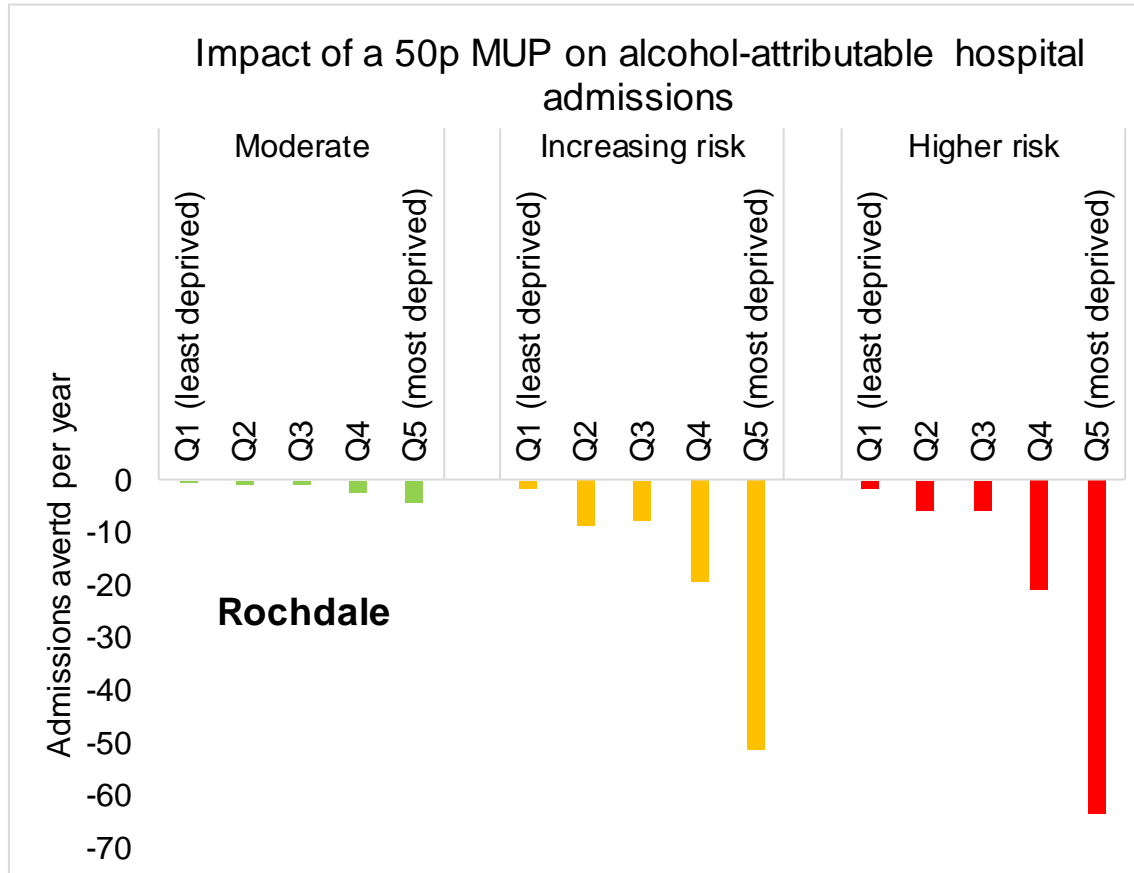
Rochdale



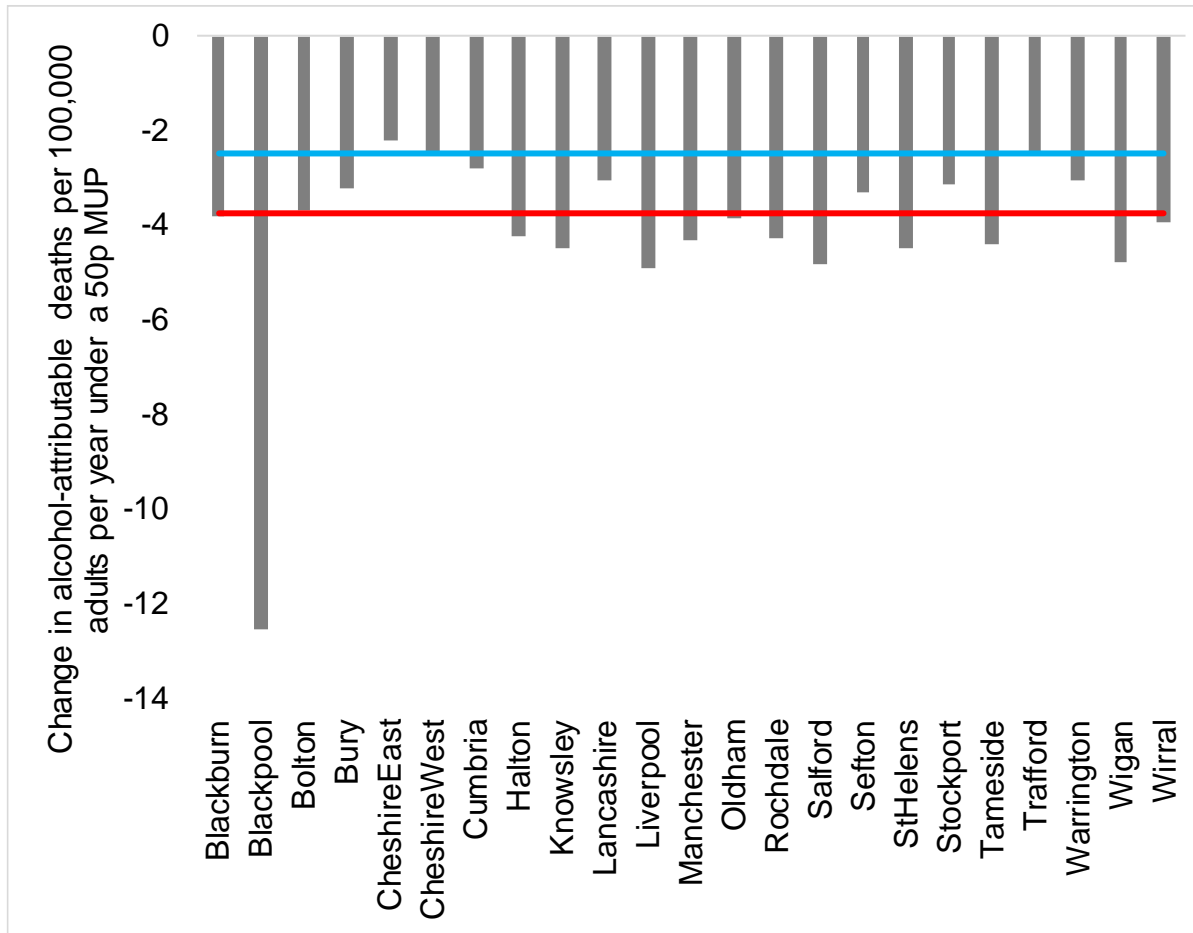
Impact on alcohol related deaths is bigger in higher risk drinkers and in deprived areas



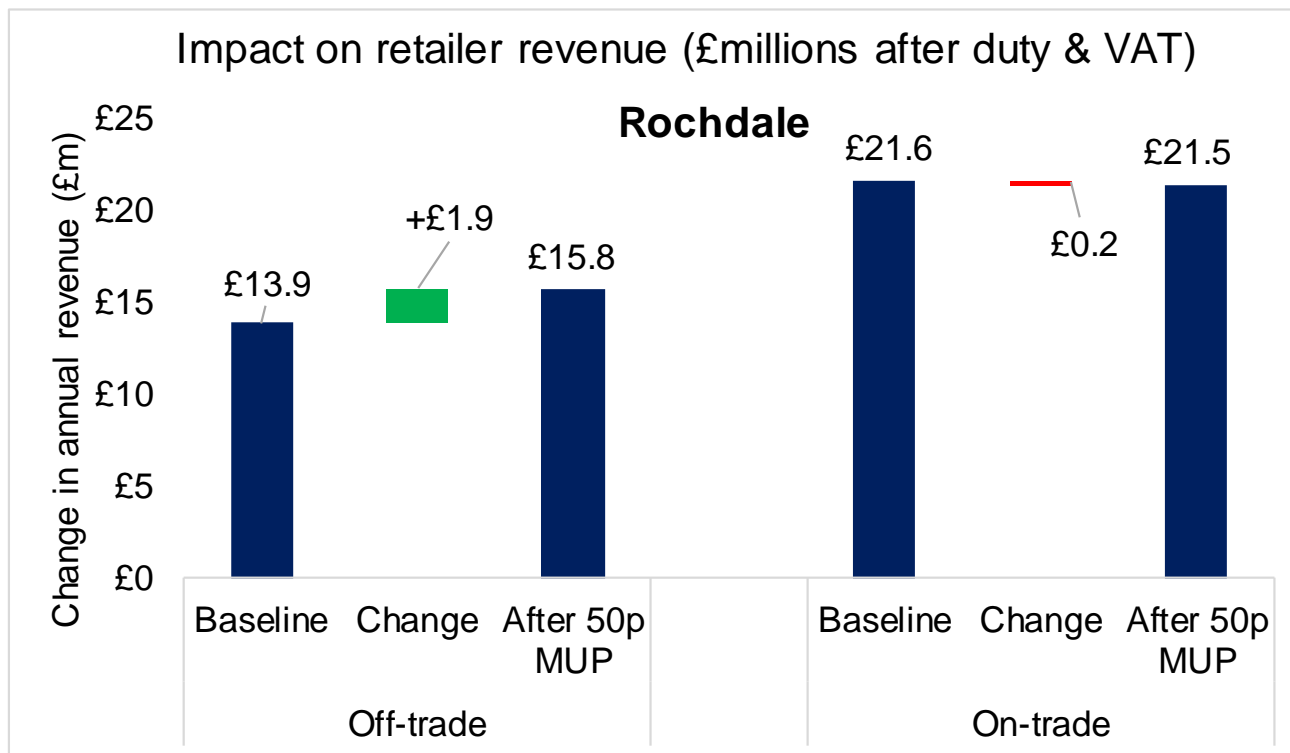
Impact on alcohol related hospital admissions is bigger in higher risk drinkers and in deprived areas



Impact of 50p MUP on alcohol related deaths is bigger in **North West** than **Nationally**



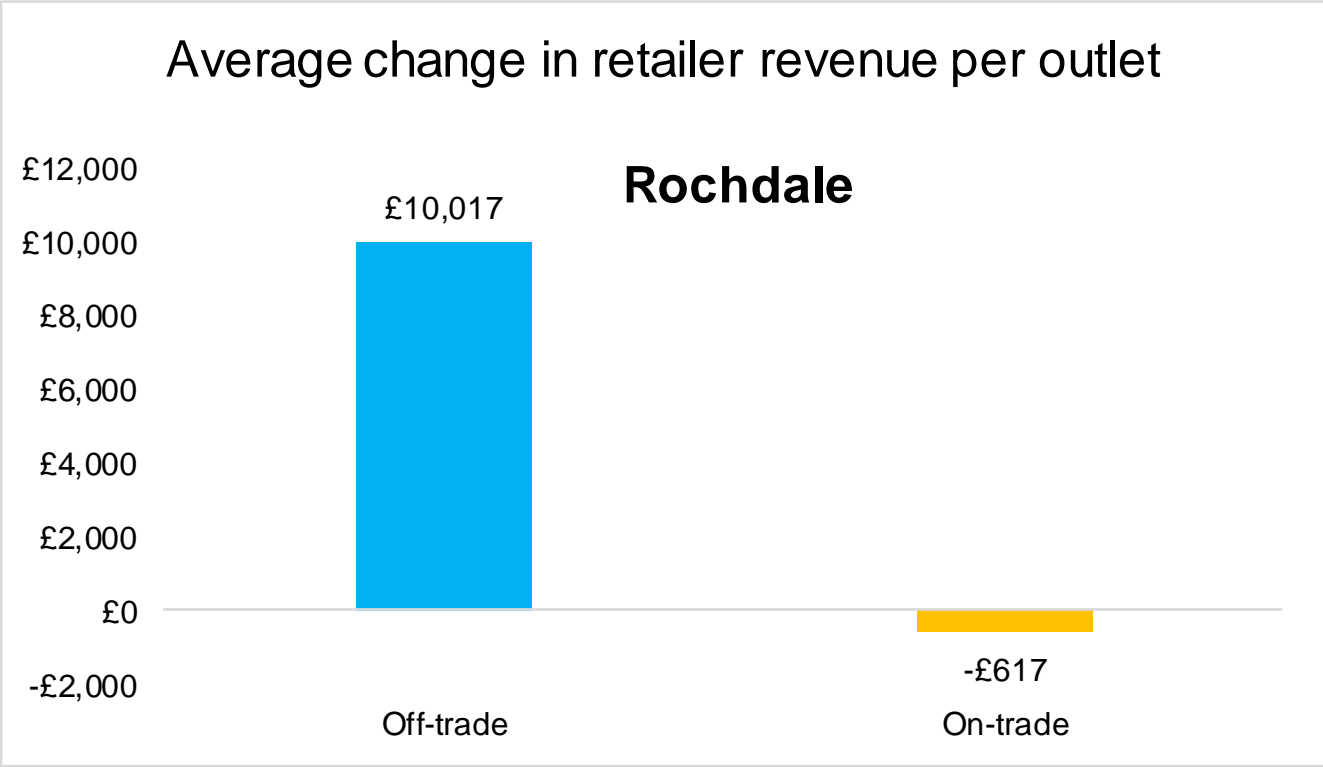
Impact on Alcohol Sales for Business



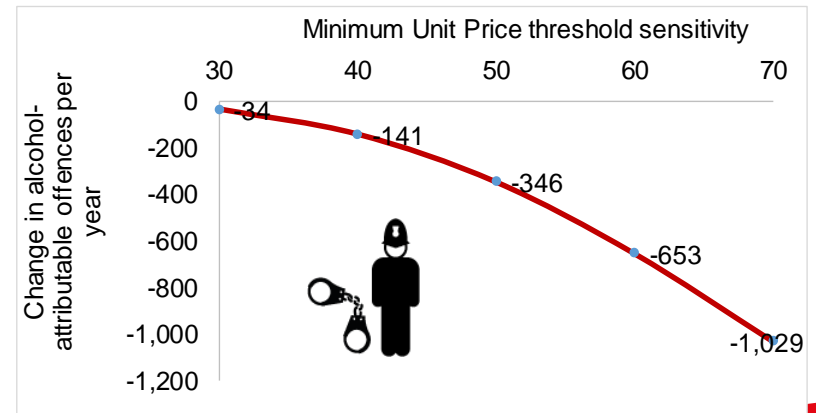
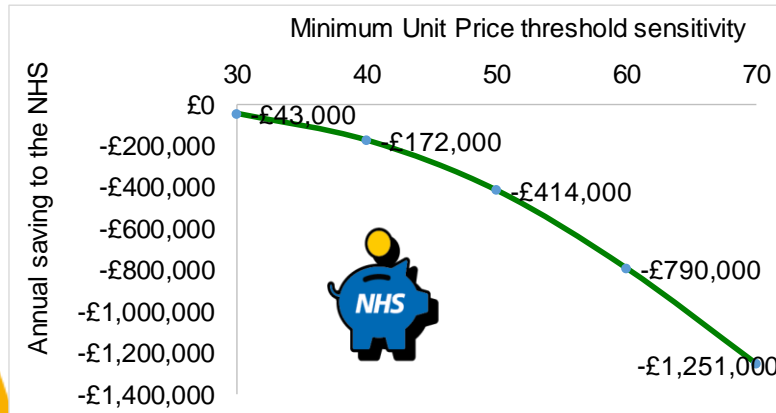
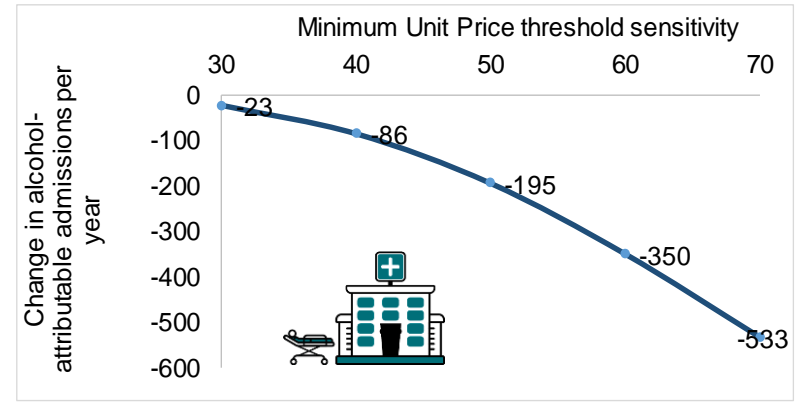
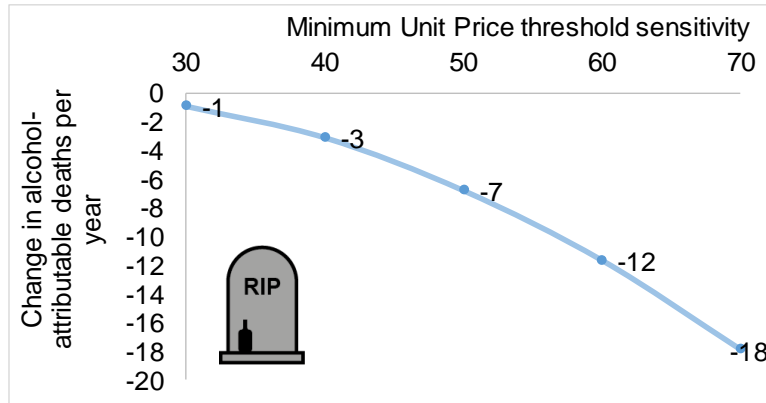
Off trade retailers would see substantial increased revenue

On trade retailers would see very little change in revenue

Impact on Alcohol Sales for Business



A 50p MUP is around 10 times more effective than a 30p threshold & 2 times more effective than a 40p threshold



What about policy?

Action to tackle the sale of cheap alcohol has been on the agenda for local authorities across the North East and North West for many years.

The Government committed to enshrining Minimum Unit Pricing in law in 2012, but later backed away, demanding more concrete evidence before proceeding.

There's a chance that it could return to the national agenda, especially following the introduction of MUP in Scotland.

Individuals, groups, and organisations continue to lobby government.

What about right here?

Legal advice commissioned by local councils determined that a possible route to introduce Minimum Unit Pricing was through the Sustainable Communities Act 2007, an act of parliament designed to:

“promote the sustainability of local communities,” in particular,

“the improvement of the economic, social or environmental well-being of the authority’s area.”



To introduce MUP this way you need two things:

ONE: The local level evidence - now available from the University of Sheffield study for all authorities in the North of England.

TWO: Local consultation based around the evidence is required to make a proposal under the Act.

What about other routes to change?

Earlier research concluded that Minimum Unit Pricing would be more effective at changing harmful drinking habits and reducing the health inequalities than an increase on duty tax, which would have to rise between 30% and 700% in order to make any comparable impact.

Alcohol duty rises would also hit moderate drinkers and the wider pub trade, while discouraging fewer heavy drinkers to cut back than other measures. Thus, Minimum Unit Pricing is considered the most effective, most targeted measure for cutting harmful drinking.

What next?

- Start a conversation about the evidence with all local stakeholders with an interest in alcohol.
.....
 - Join in the conversation by considering the evidence from your own perspective.
.....
 - Share the evidence with decision makers in your local authority.
.....
 - Share this presentation formally with committees such as your Health and Wellbeing Board...(we've designed this so you can delete and add slides).
- Share this presentation informally on hard copy or on a laptop in meetings.
.....
 - Use our individual infographics to start a conversation on Twitter or LinkedIn.
.....
 - Use the hashtag #MUPlocal so we can monitor the online conversation on your behalf.
.....
 - Use our Frequently Asked Questions to answer common queries.
.....
 - Use our (very brief) project summary to start the conversation.

And then?

Responsible decision makers in your local authority will decide:

Their position in relation to the introduction of Minimum Unit Pricing

Whether the evidence is sufficient to warrant a public consultation exercise.



#MUPlocal

End of Detailed Presentation

Exploring the impact of the local implementation of a
minimum price for a unit of alcohol

- the evidence for

Rochdale