

CHOICE & COMPASSION

dementia care stories



respecting dignity, independence,
and rights in dementia care



DAVID



David has Alzheimer's disease and he's been living in the care home for a few months.



Hello David, how are you, my love?

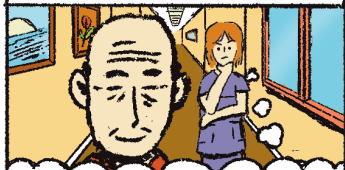
TASHA, CARER

Very well, thank you. I think I might go for a walk in the garden.

Are you sure? It's a bit cold and windy today!

I don't mind. I used to walk up and down hills all day long!

Tasha checks that David understands what she is saying and waits for him to make his own decision.



David has shown me that he understands it's cold, and he is still happy to go out. I'm still not sure it's a good idea...

We don't want you to catch a cold and get poorly!

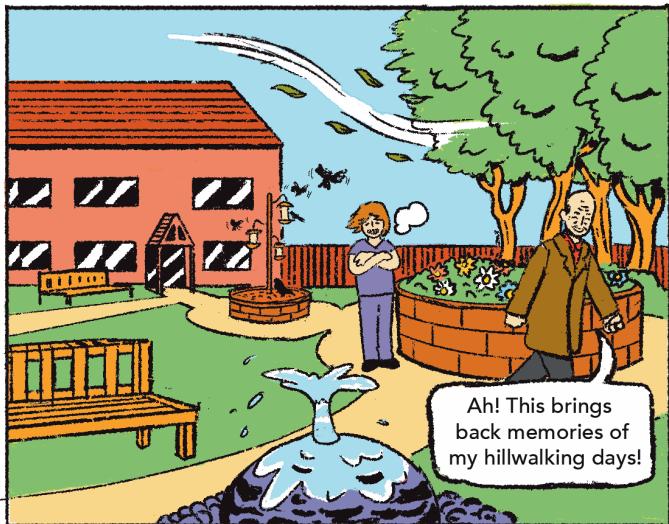
I can't just sit inside all day! I was going to put a coat on.

Great idea!

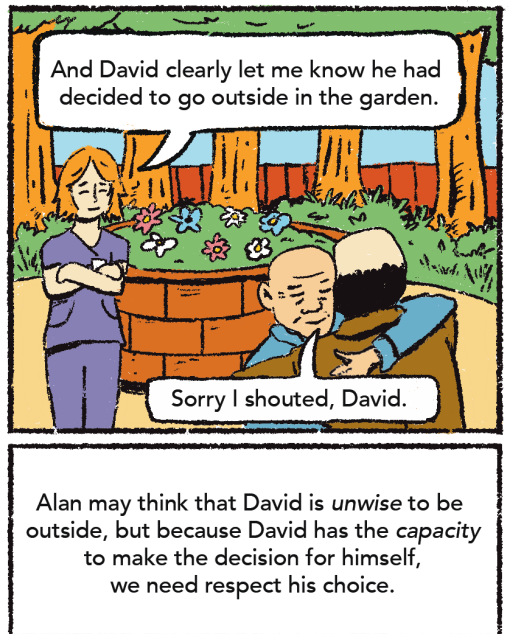
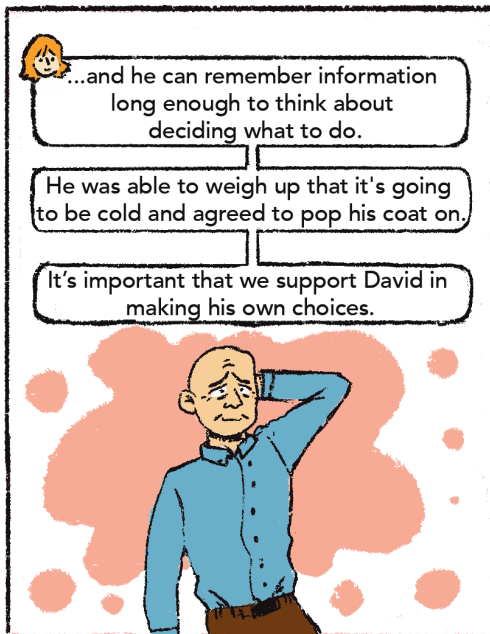
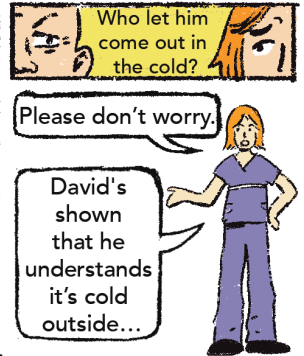
Here you go!



Thank you.

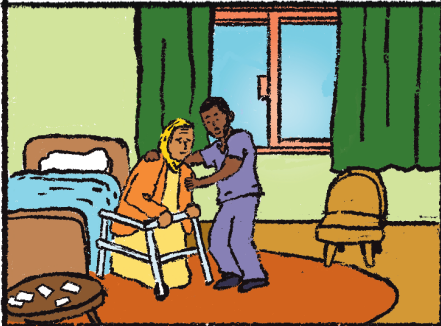


Ah! This brings back memories of my hillwalking days!



A-M-I-N-A

Amina has vascular dementia, she's been living here for two years.



Ok, Mrs Hassan, are you ready to go?

ARUN, CARE WORKER

I....

Should I get your communication cards? They're very helpful when it's hard to find your words.



Who's ready to do an activity?



How about we play some

BINGO?



I like bingo!

Oh yes!

Me too!

Go on then!



Whats the matter?

I....

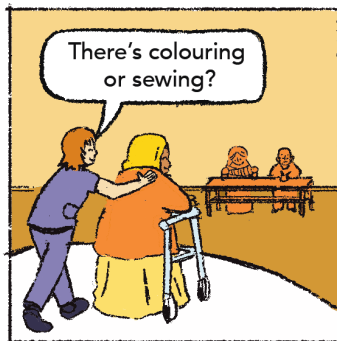
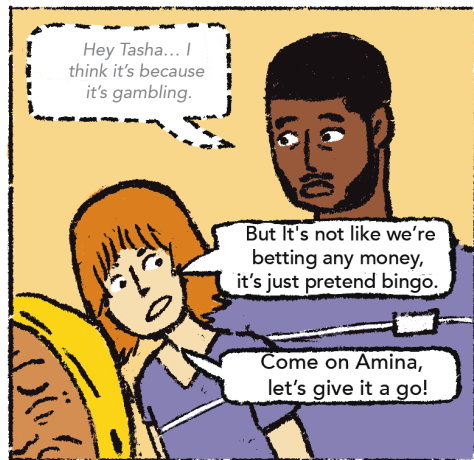
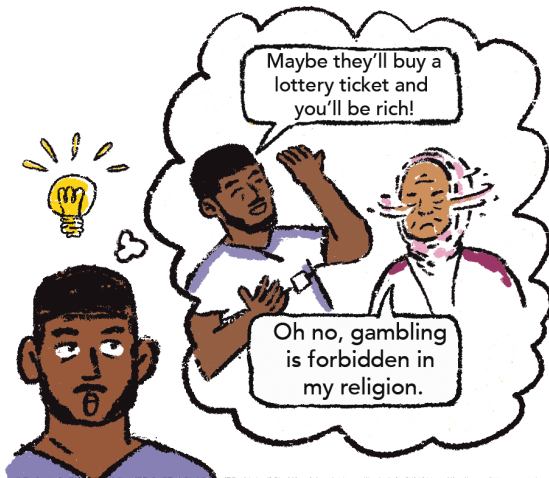


Go on, give it a go, it will be fun!



I wonder what's wrong...

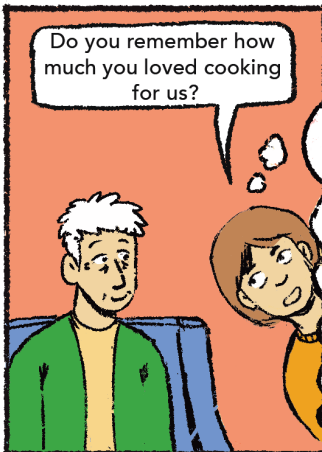
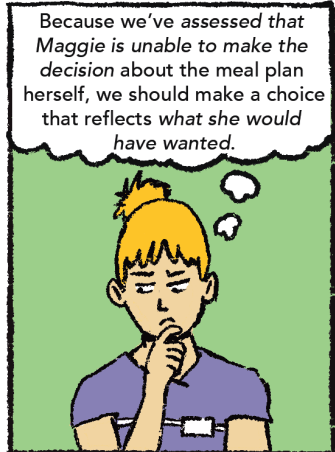
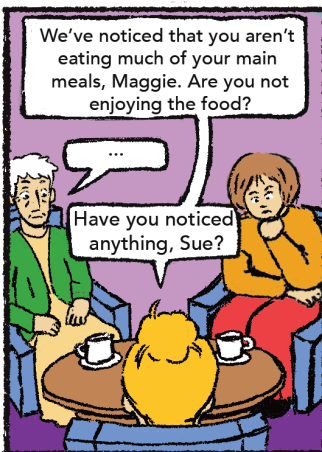
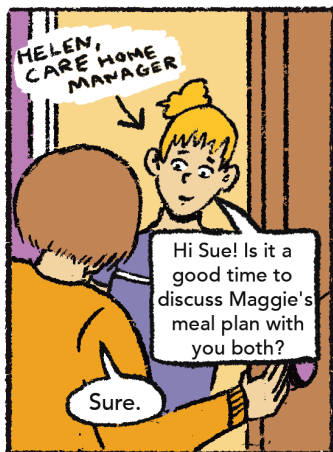
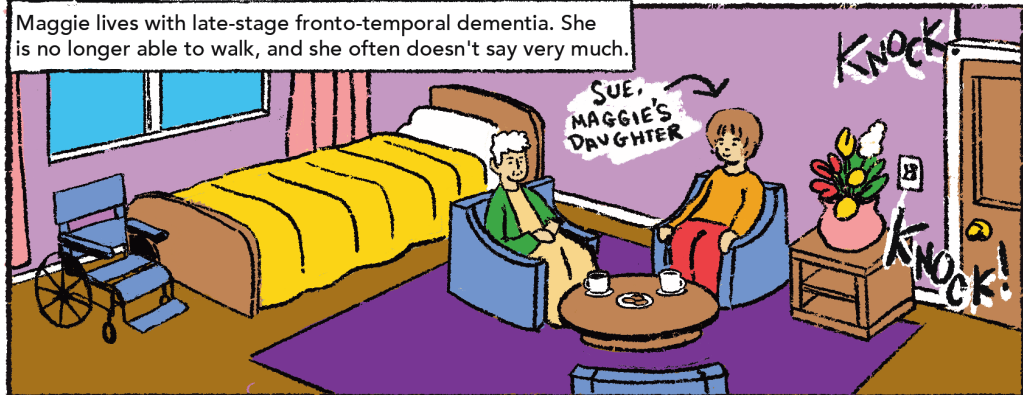


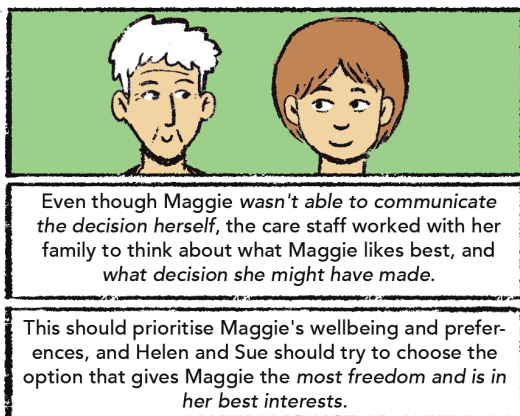
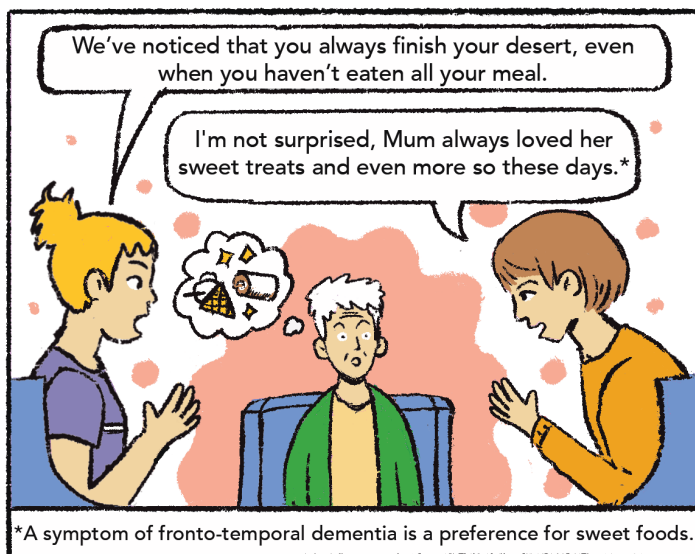


Capacity is determined for each decision. Amina can still make a decision about playing bingo or not, but she may struggle with more complex decisions, for example, about her treatment.

MAGGIE

Maggie lives with late-stage fronto-temporal dementia. She is no longer able to walk, and she often doesn't say very much.



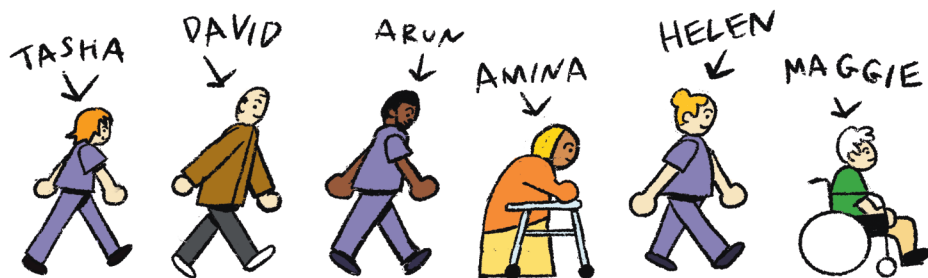


CAPACITY



means being able to understand and make decisions. Some key points:

- Having dementia doesn't mean someone can't decide for themselves - we always start by assuming they can.
- Before deciding that someone lacks capacity, we must support them, for example, by simplifying, using pictures, or allowing more time.
- People have the right to make choices that others might consider unwise or unconventional, even if it differs from what others might recommend.
- If someone lacks the capacity to make a specific decision, actions taken on their behalf must prioritise their best interests by thinking about their feelings, beliefs and values.
- When deciding for someone else, choose the option that respects their rights and freedom the most.



Step inside a care home, where every day is about respecting choices. Join David, who loves his walks, Amina, who stands by her beliefs, and Maggie, whose love for sweet treats still shines through.

This comic shows how care homes can support people living with dementia with their independence and dignity, even when decisions seem tricky. Discover the power of care that truly puts people first and protects their rights.



Researchers

Emily Fisher
Louis Stokes

Bryony Waters-Harvey
Alys Wyn Griffiths

Illustrations

Skai Campbell

Editor

Gabi Putnoki



This comic was created as part of the Care in Comics Project at the University of Sheffield, led by the Centre for International Research on Care, Labour and Equalities (CIRCLE). <https://sheffield.ac.uk/circle/care-comics>

The comic is based on findings from two NIHR-funded studies: ENACT (Evaluating staff training and the implementation of the Mental Capacity Act in care homes for older adults - Award ID: NIHR152800) and FREEDEM (Reframing 'wandering' as a meaningful activity using realist synthesis and qualitative exploration - Award ID: NIHR205173).



University of
Sheffield | CIRCLE

NIHR

National Institute for
Health and Care Research